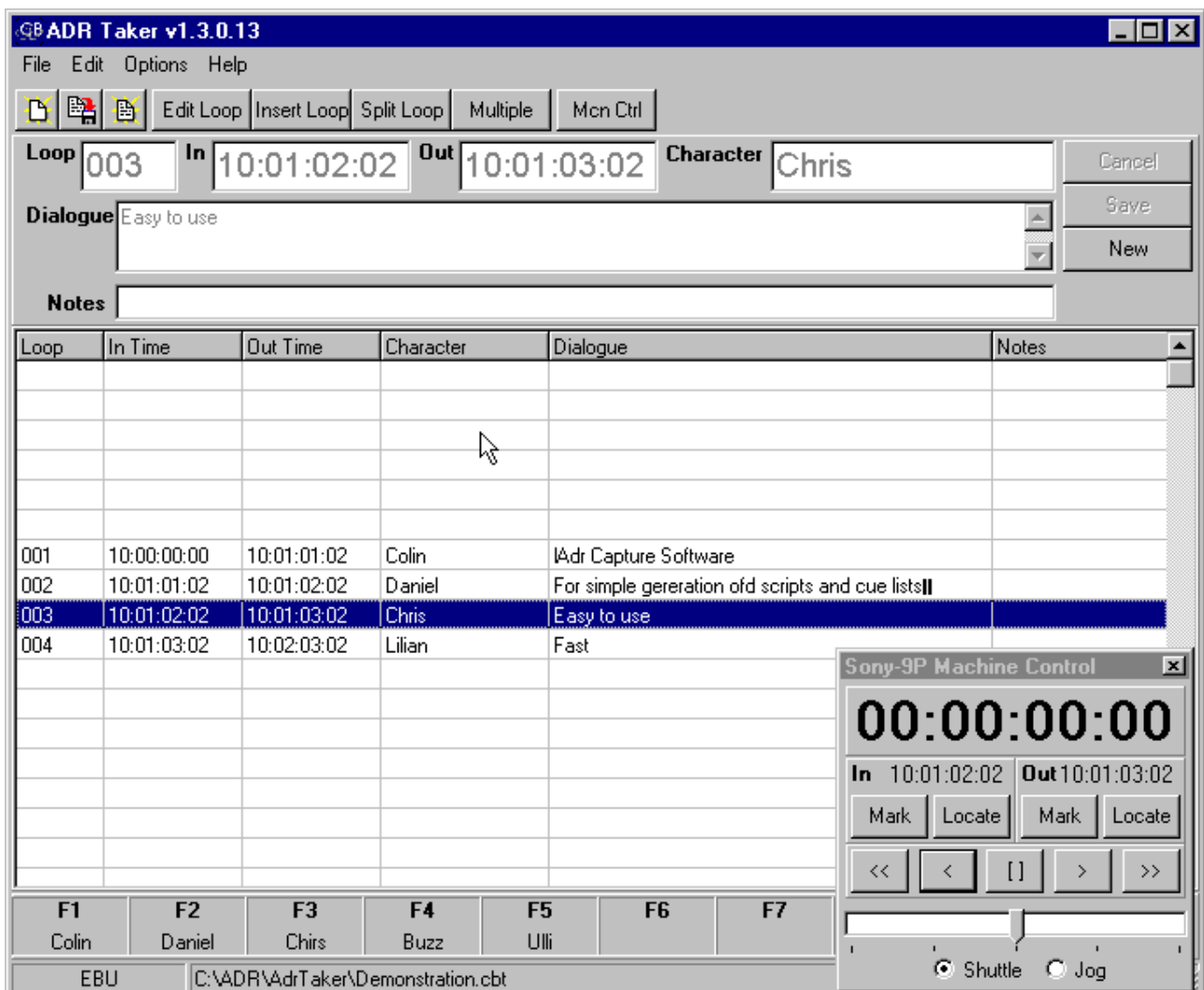
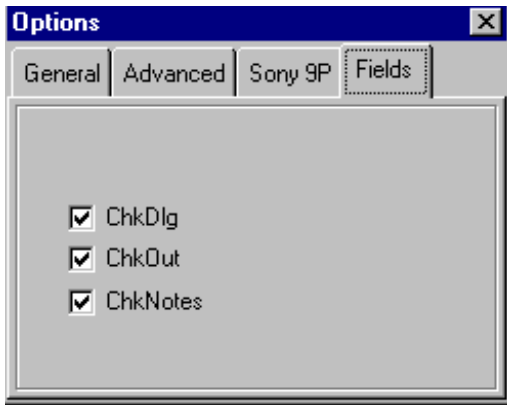


AdrTaker: Cue List Preparation Tool

Multiple Selectable Entry Fields..... In Time, Out Time, Character, Dialogue, Notes
 Programable Function Keys..... Single Key Character Entry
 Simplified Timecode Entry..... Hours and Minutes tens copied from Previous Entry
 Last Out point becomes next inpoint
 Sony P2 Machine Control..... In and Out Capture
 In & Out time Checking Loop Duration, Out before In
 Printer Driver



Open AdrTaker, depress new and start entering data, use the tab key to change the current field. Then save the cue using Save/Next, if it's the last cue use the Save key to disable th edit mode. It's that simple but there are a few options to make your life simpler.



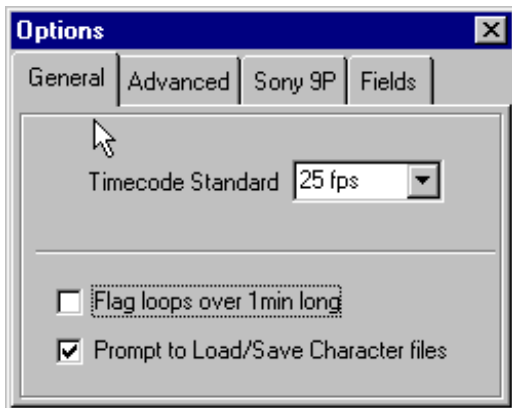
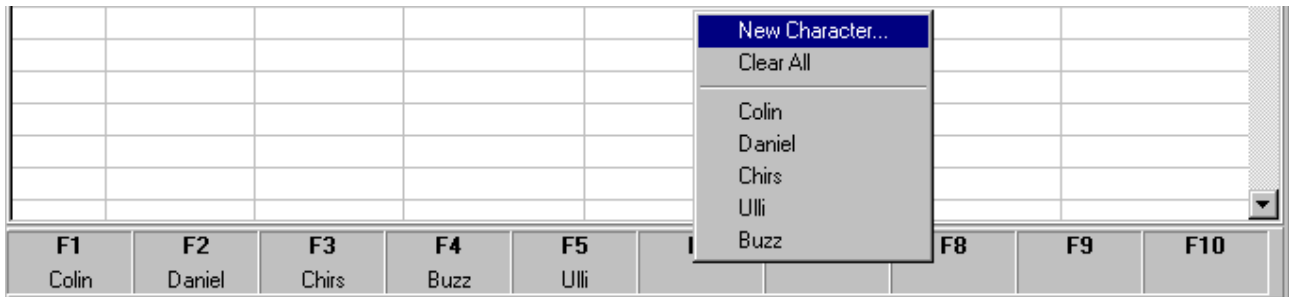
Selecting Entry Fields

You may not wish to enter out time character, dialogue or notes to prevent the cursor stopping at any or all of these use select **Options | Fields**. You can enable/disable these three fields. If you change your mind later

This may also be changed whilst editing cues.

Using Character Names

Character names are treated differently from the other fields, the same names are used repeatedly, names can therefore be selected from a list or assigned to Function keys.



In this way character names may be entered quickly and accurately.

When preparing lists for a series or where you may come back to the list at a later date then you can save/load the character lists. If you never use character name then you may disable the associated prompt.

In and Out time Checking

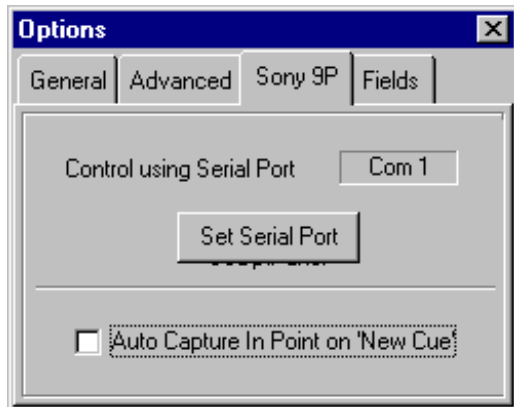
When both in and out times are used they are checked whilst entering the loop. You are not able to enter a loop where the out time is before the in time, unless disabled you will be warned if a loop is longer than 1 minute. Provided that the correct timecode standard is selected then the timecode values will also be validated.

The language used for error messages is user selectable. Please let us know when the terms are not correct.



Machine Control

The current version has a windows machine control panel the next will also have an interface to a USB Shuttlepro Jog/Shuttle keyboard (Approx £100). The



machine control panel allows you to capture both in and out using the mark keys. The locate keys allow the checking of a list. Let us know if you need any other commands we are in the process of designing Mark II.



Saving and Printing

When saving or printing the project information screen will be presented. This information will be used when printing the cue sheet as follows.

The extract below is from a pdf printout. Note that the registered user name in this case 'Colin' is printed at the top of every sheet.



Colin



Production Demonstration	Episode The First
Just to show that we can make them	

Loop: 001	10:00:00:00	10:01:01:02
Colin	Adr Capture Software	
Loop: 002	10:01:01:02	10:01:02:02
Daniel	For simple generation of scripts and cue lists	
Loop: 003	10:01:02:02	10:01:03:02
Chris	Easy to use	
Loop: 004	10:01:03:02	10:02:03:02
Lilian	Fast	