



## UR-422usb



### Universal RS422/USB Remote

- **Direct connection to Audio/Video Workstations via USB**
- **Sony P2, VDCP, and Odetics protocols with Clip select**
- **Optional T-Bar Control – Slow motion or Clip position**
- **Two RS-422 ports – Port A may be configured as input or output**
- **Precision weighted Jog Wheel with Shuttle, Jog or Step function**
- **Bi/Tri Level Video Sync Input – Frame accurate control**
- **LTC Timecode Output – Controlled Machine or Virtual Machine**
- **Plug & Play, Automatic Machines Recognition and Configure**
- **32 cue points and 16 loops**
- **8 GP Inputs or Outputs – Telecine, video switcher control**
- **Large Display 2 line by 40 character display**
- **22 User Definable keys with LED's All keys are user definable via PC/Mac Program**
- **Key functions include Track Arm, Monitor, Edit, Locates, Loop's, Macro's**
- **Special CB Macro functions Instant Replay, Instant Forward, Again**
- **Field software update Software may be updated by user using PC or Mac with serial port**

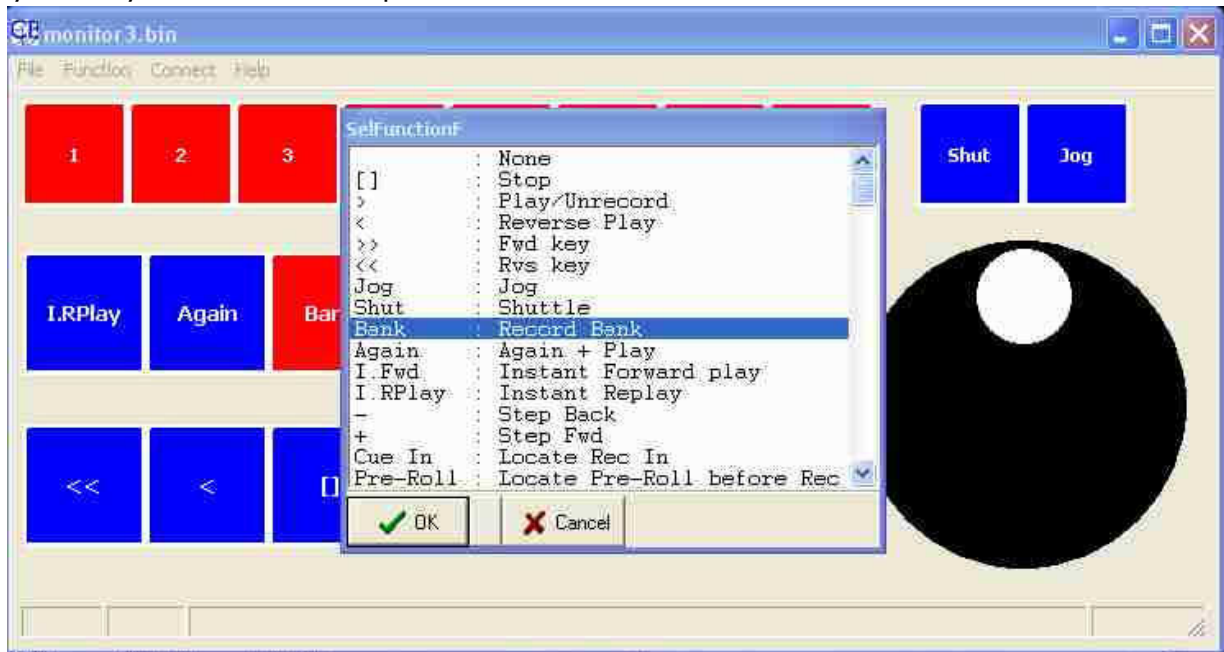
UR422-USB remote is designed as a small footprint low profile versatile remote control and incorporates the custom upgrades that were made to the original UR-422. The keyboard is user definable and may be configured to suit specific applications. The USB port provides the power and direct connection to a DAW or Video Workstation to provide track arming and a Jog/shuttle machine control interface.

The machine control and track arming can be routed to separate ports allowing control of video playback whilst recording on an separate audio recorder

The UR-422 is supplied with a USB power supply for use when not connected to a computer.

## User Defined Keys

The function of every key may be defined by using the windows set-up tool. This shows a picture of the keyboard. Right click on any key and a key function list is displayed, select the function and the key label and colour on the screen will change. Once you have selected your keyboard layout download and update the labels on the UR422.



## RS422 Ports

The two ports may be used as two outputs or one input and one output.

## USB port

Configured as USB RS422 port, may be used for direct connection to DAW as controller or device.

## Display

The can show either the current transport machine and record track arming or two machines.

## Commands

The Transport commands may be sent to either or both machines.

## Track Arming

The track arming can be fixed or used with a bank key to arm all tracks on one or both machines.

## Cue Points

When using the 1-8 keys for cue points the bank key allows access to 32 cue points. When used with the Bonsai the cue points include both timecode and clip number.

i

**Size:** 8.1" x 5.1"

**Availability:** Available now from stock

## CB Electronics

Loddonside, Lands End House, Beggars Hill Road, Charvil, Berkshire, RG10 0UD, UK  
Tel +44 (0) 1189 320345 Fax +44 (0) 1189 320346  
<http://www.colinbroad.com> E-mail [Support@colinbroad.com](mailto:Support@colinbroad.com)