



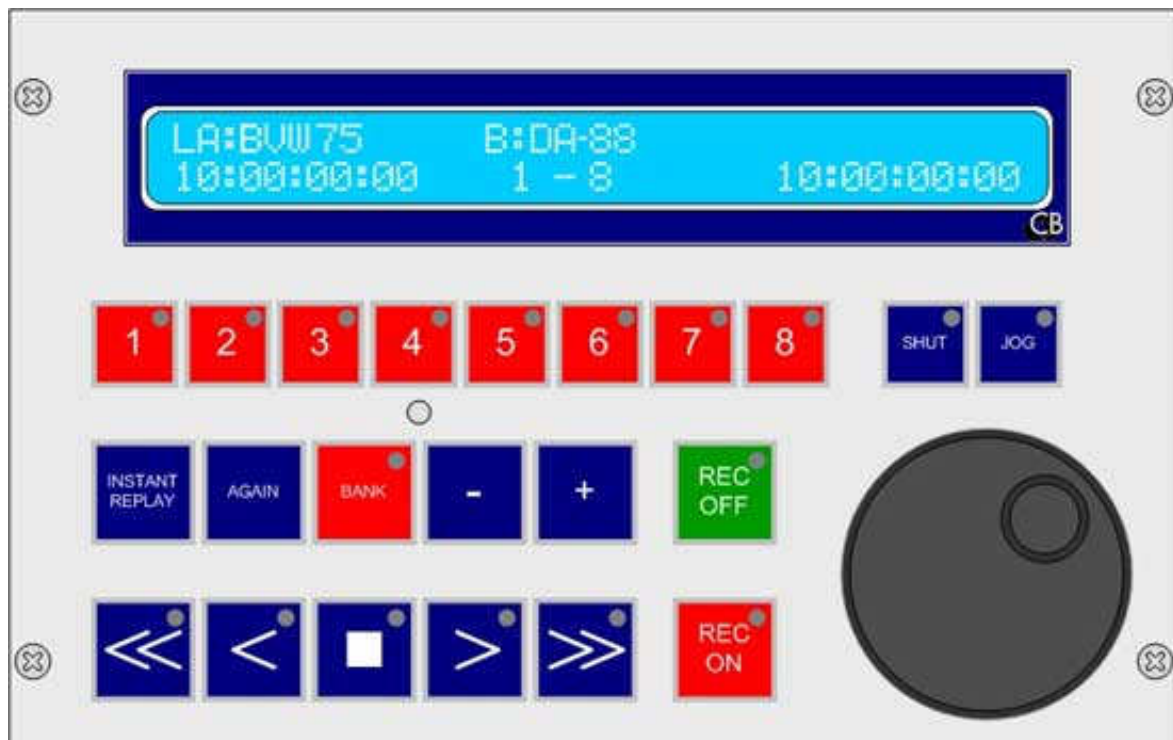
UR422v2: universal RS422 remote

- * Sony P2 protocol..... Future versions will include Midi and DVD Protocols
- * Two RS422 ports Two Outputs or One Input and One Output
- * Plug & Play Recognizes connected machines and Configures automatically
- * Large Display 2 line by 40 character display
- * 22 User Definable keys with LED's..... All keys are user definable via PC Program
- * Field software update Software may be updated by user using PC with serial port
- * Key functions include Track Arm, Monitor, Edit, Locate, Loop's, Macro's
- * Special CB Macro functions Instant Replay, Instant Forward, Again
- * Two packages Low Profile Desktop or 2U Rack Mount with tilting panel
- * Jog Wheel..... Precision weighted Low Profile Jog Wheel
- * Version 2..... Four GP Inputs, Four GP Outputs and Biphase Synchronizer Option

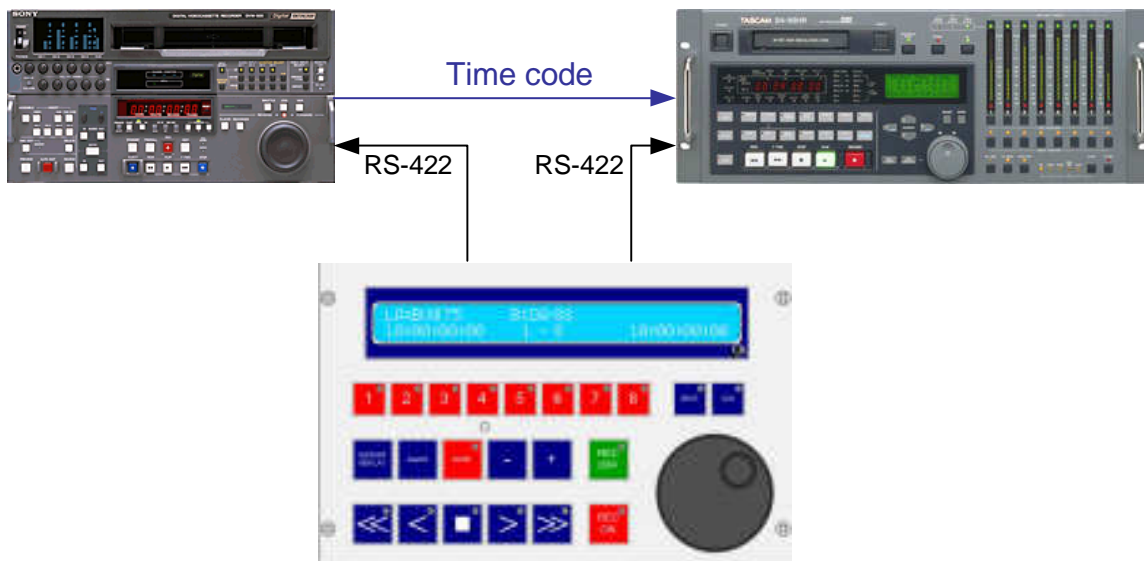
UR422 remote is designed as a low cost remote control for general-purpose use. The keyboard is user definable and may be configured to suit specific applications.

When configured with input and output the controller may be connected to a DAW to provide track arming and a Jog/shuttle machine control interface.

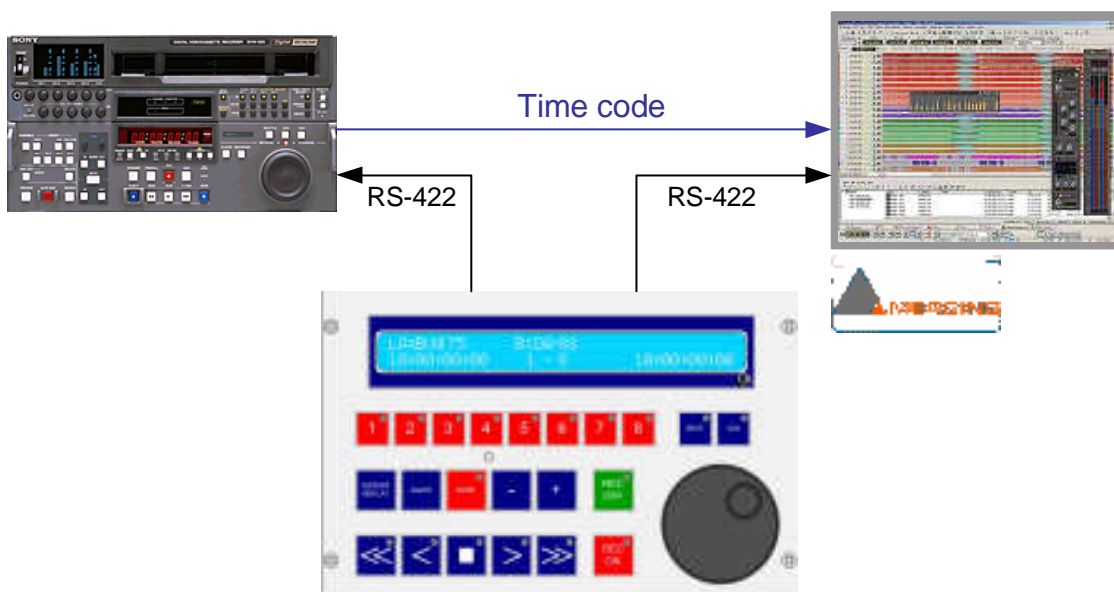
When configured with two outputs one may be used to control a video the other to control track arming and master record on/off on a multi-track hard disk or tape.



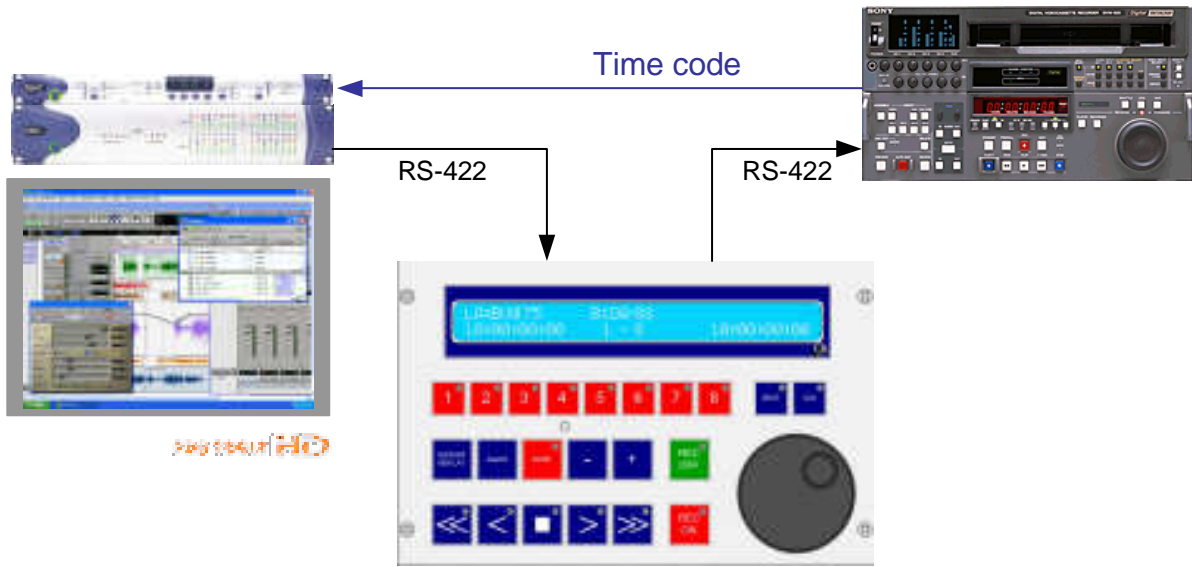
Controlling a Video and recording on a DA-98 with the UR-422



Controlling a Video and recording on a DAW(Pyramix) with the UR-422

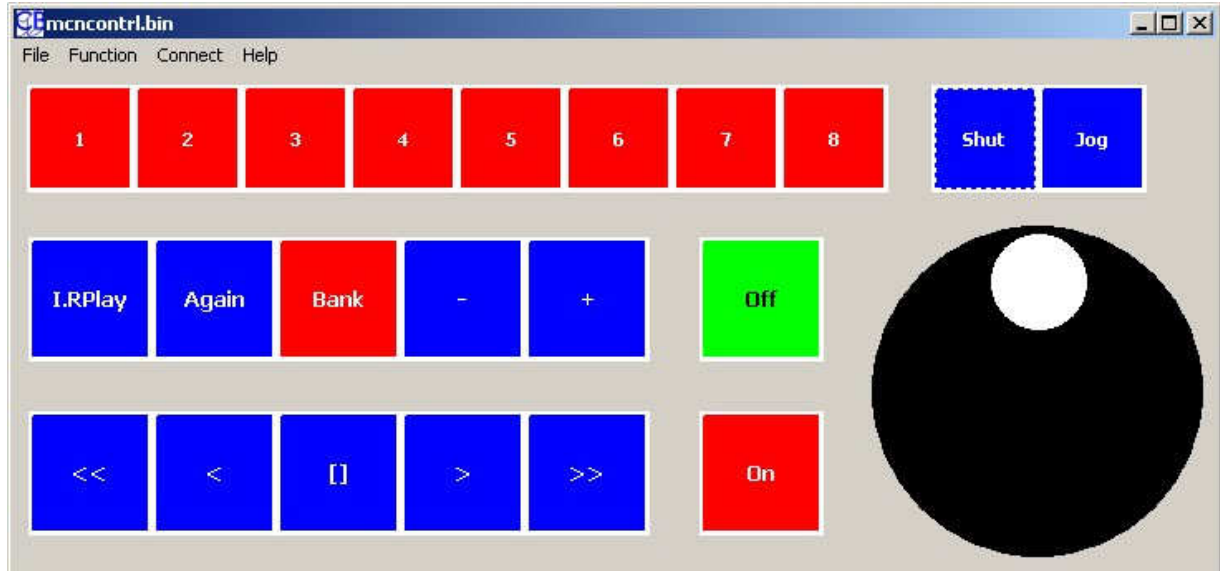


Using the UR422 in line between a DAW and Video

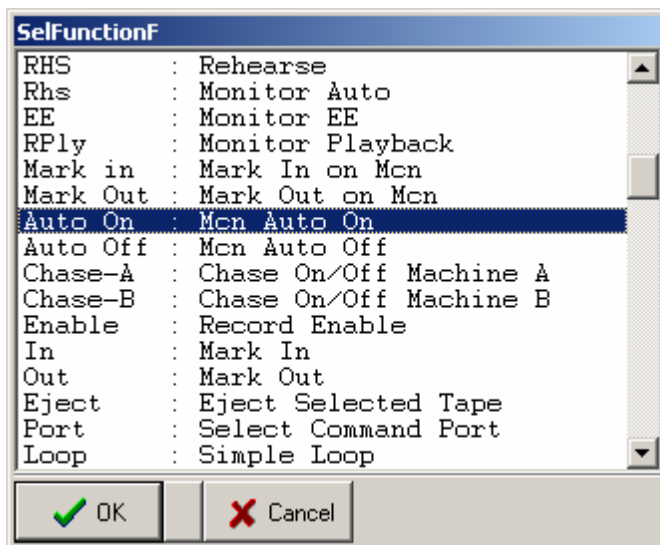


Programming the UR422

All the keys on the UR422 are user programmable; a free visual programming tool is available from our web site.

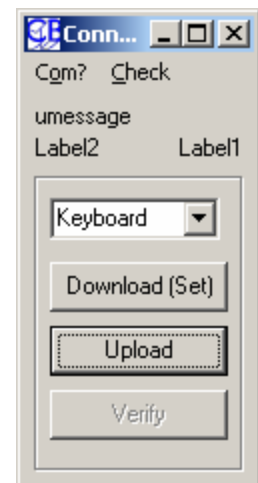


Right clicking on any key will bring up a key definition window; select the function for that key. Once all the keys have been defined then download the key definition file to the UR422 via the serial port. The



paper key labels may be changed to suit your desired keyboard layout.

For exhibition and fixed locates the loops and fixed locate points may be programmed by left clicking on the appropriate keys. The Program allows for saving/loading the configuration files to/from disc.



Software updates

The flash rom of the UR422 may be programmed via the serial port. Software updates will be available on our web site.

CB Macro Key Functions

When used with CB SR/RM Systems or CB Server up to 8 keys may be defined as macro keys.

To program from the UR422, hold the key depressed until the macro number is requested, then enter the macro number using the numeric keys (The number keys may not be used as macro keys) enter the required macro number. Once the number is entered depress the macro key again to store.

These keys may also be programmed from the UR422 keyboard programming utility. If the Numeric keys are defined as macro keys they may only be programmed by the programming utility.

CBServer Macros (WinMac)

CBServer has eight Macro functions that can be programmed on the Serial input window. These may be accessed by programming the Numeric Input keys as WinMac keys (Menu 3 Display/Bank) or by programming a key directly as WinMac1..WinMac8. The function of these keys is defined within CBServer and not the UR422.

GPIO Option

Version II of the UR422 has an optional GPIO connection. The 9 pin 'D' Male on the rear provides 4 GP Inputs and 3 GP Outputs or 4 GP Outputs and 3 GP Inputs. The connections are as follows:-

Pin 1	Ground	Pin 6	Input 1 / Output 1 (SP1 Linked)
Pin 2	Input 2	Pin 7	Output 2
Pin 3	Input 3	Pin 8	Output 3
Pin 4	Input 4	Pin 9	Output 4
Pin 5	+5v		

Bi-phase Synchronizer Option

The Bi-phase inputs are GPI inputs 1 and 4, Internal 10K pull ups to +5volts are fitted. If the direction is incorrect then reverse the inputs. The Biphaser input frequency must be 10 pulses per Frame (240 / 250Hz). Two Special Macros are fitted Offset/Chase and Chase type. Two types are chase are available, Audio Lock and Tight Lock. Audio uses varispeed commands to maintain lock +/- 2 frames, tight lock uses locate commands to maintain lock

Biphase A = Pin 6
Biphase B = Pin 4
Ground = Pin 1