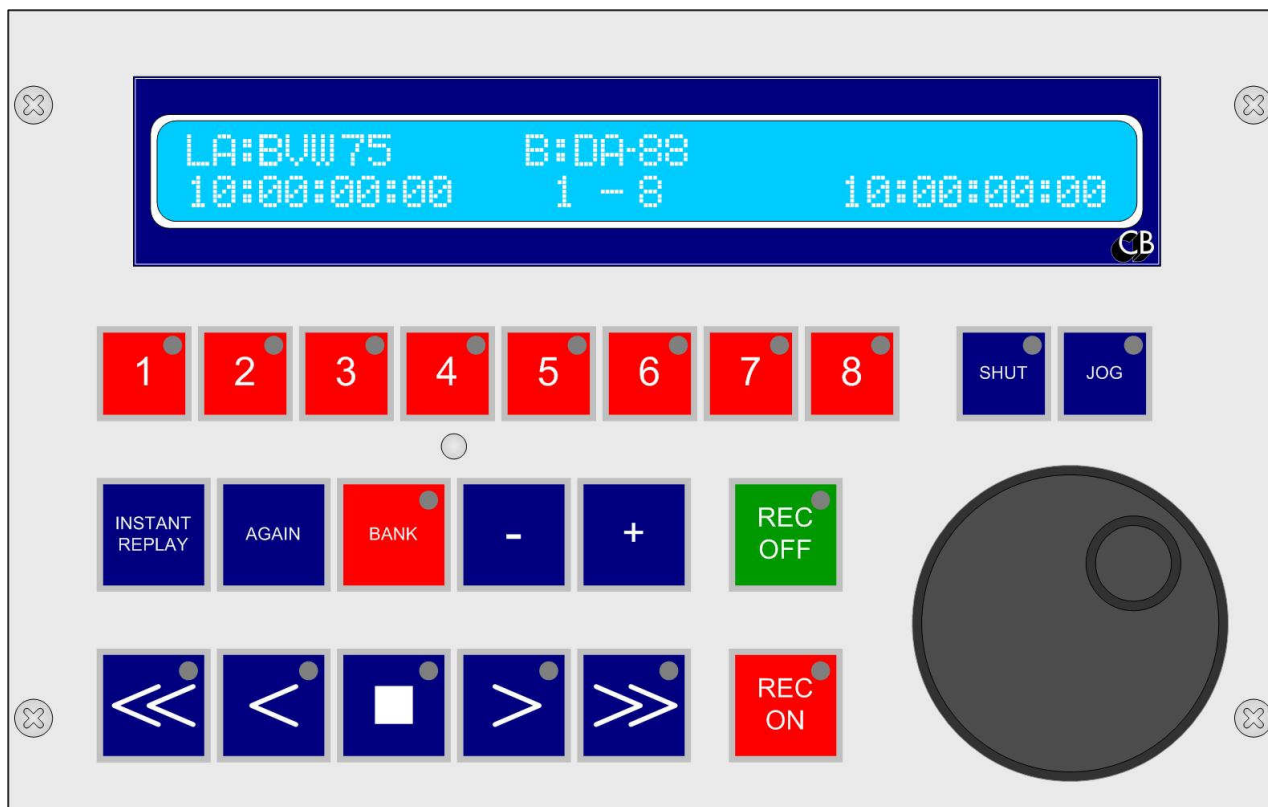




UR422

Universal RS422 Remote



- **Two RS422 ports Two Outputs or One Input and One Output**
- **Plug & Play, Automatic Machines Recognition and Configure**
- **Large Display 2 line by 40 character display**
- **22 User Definable keys with LED's All keys are user definable via PC Program**
- **Field software update Software may be updated by user using PC with serial port**
- **Key functions include Track Arm, Monitor, Edit, Locates, Loop's, Macro's**
- **Special CB Macro functions Instant Replay, Instant Forward, Again**
- **Two packages Low Profile Desktop or 2U Rack Mount with tilting panel**
- **Jog Wheel Precision weighted Low Profile Jog Wheel**
- **Midi MMC Protocol MMC or OEM Generic, requires Midi Interface Card**
- **Rosendahl Bonsai Support Clip select, Menu and Power**
- **Optional high profile jog wheel**
- **Small footprint, Low profile design**
- **32 cue points**

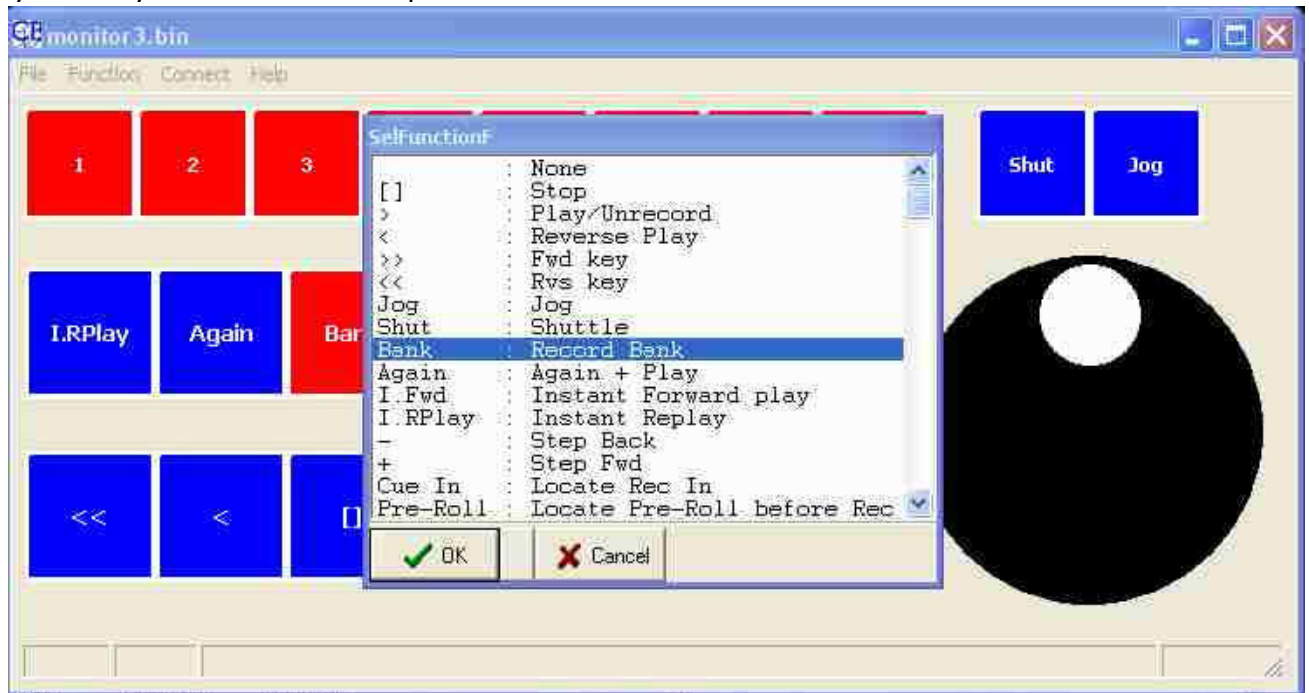
UR422 remote is designed as a low cost remote control for general-purpose use. The keyboard is user definable and may be configured to suit specific applications.

When configured with input and output the controller may be connected to a DAW to provide track arming and a Jog/shuttle machine control interface.

When configured with two outputs, one may be used to control the video and the other to control track arming and master record on/off on a multi-track hard disk or tape.

User Defined Keys

The function of every key may be defined by using the windows set-up tool. This shows a picture of the keyboard. Right click on any key and a key function list is displayed, select the function and the key label and colour on the screen will change. Once you have selected your keyboard layout download and update the labels on the UR422.



RS422 Ports

The two ports may be used as two outputs or one input and one output.

Display

The can show either the current transport machine and record track arming or two machines.

Commands

The Transport commands may be sent to either or both machines.

Track Arming

The track arming can be fixed or used with a bank key to arm all tracks on one or both machines.

Cue Points

When using the 1-8 keys for cue points the bank key allows access to 32 cue points. When used with the Bonsai the cue points include both timecode and clip number.

i

Size: 8.1" x 5.1"

Price: £700

Availability: Available now from stock

CB Electronics

Loddonside, Lands End House, Beggars Hill Road, Charvil, Berkshire, RG10 0UD, UK
Tel +44 (0) 1189 320345 Fax +44 (0) 1189 320346
<http://www.colinbroad.com> E-mail Support@colinbroad.com