



# Using the ProTools PD-1 Session Template

<b>Using the ProTools PD-1 Session Template</b> .....	1
The Template .....	2
Equipment List.....	2
From Digidesign: .....	2
From CB Electronics: .....	2
A note on using Windows XP.....	2
Connections .....	2
Configuring Protocols for use with the PD-1 Session Template.....	3
Protocols Setup .....	3
1) Open the PD-1 Template Session. ....	3
2) Open the <i>Setup &gt; Session Setup</i> dialogue box.....	3
3) Open the <i>Setup &gt; Peripherals</i> dialogue box. ....	4
4) Open the <i>Setup &gt; Preferences</i> dialogue box.....	5
Destructive Punch .....	6
Solo Safe .....	6
Configuring the PD-1 for use with the PD-1 Session Template .....	7
Navigate the Menu .....	7
Selecting the 24 Track Template from the PD-1 Menu .....	7
Read the PD-1 Template.....	7
Stem and Track Names.....	7
Read and Assign Track and Stem Names From ProTools .....	7
Solo Safe .....	8
Assigning the Shift held Function to Solo Safe .....	8
Print Master .....	8
Assigning the Shift held Function to Print Master .....	8
Protecting your settings.....	8
Protecting Track/Stem Assign.....	8
Locking the Shift held Function .....	8
Using the PD-1 with the RM-6.....	9
RM=6 Settings when used with the PD-1 .....	9
Appendix A.....	9
Appendix B .....	10
Template: PD-1 Configuration after leaving the menu with .....	10
ProTools Specific Configuration .....	10

## The Template

This example template is supplied as an example of a simple application; once you understand how to use the PD-1 we are sure that you can me much more inventive. The template is for three 5.1 stems (Dx, Mx, Fx) that sum in the master stem (COMP). The COMP outputs feed the monitoring via the main 5.1 analogue output of the 192. The Outputs are arranged to work with an XMON, where 1=L, 3=C, 5=R, 6=Ls, 7=Rs, and 8=LFE. If your monitor setup is different, visit the I/O setup dialogue box and reorder the chiclets in the 'output' tab.

## Equipment List

To use this template session, you will need:

### From Digidesign:

At least one Pro Tools HD card  
At least one 192 Interface  
A SYNC I/O  
Machine Control option  
Pro Tools HD 7.2 or higher

### From CB Electronics:

A PD-1 Monitoring Controller  
A USB-422 with appropriate 9-pin cable  
The driver for the USB-422 can be downloaded here:  
<http://www.colinbroad.com/cbsoft/usbdriver.html>  
The PD-1 Template Session can be downloaded here:  
<http://www.colinbroad.com/cbsoft/pdsoft.html>

### A note on using Windows XP

If your Pro Tools HD system is running on Windows XP, you will need to renumber the COM ports as Pro Tools can only connect to Comm1 and Comm2. More information on how to do this can be found in Appendix C of the USB-422 manual, which can be downloaded here:

<http://www.colinbroad.com/cbsoft/usbdriver.html>

### Connections

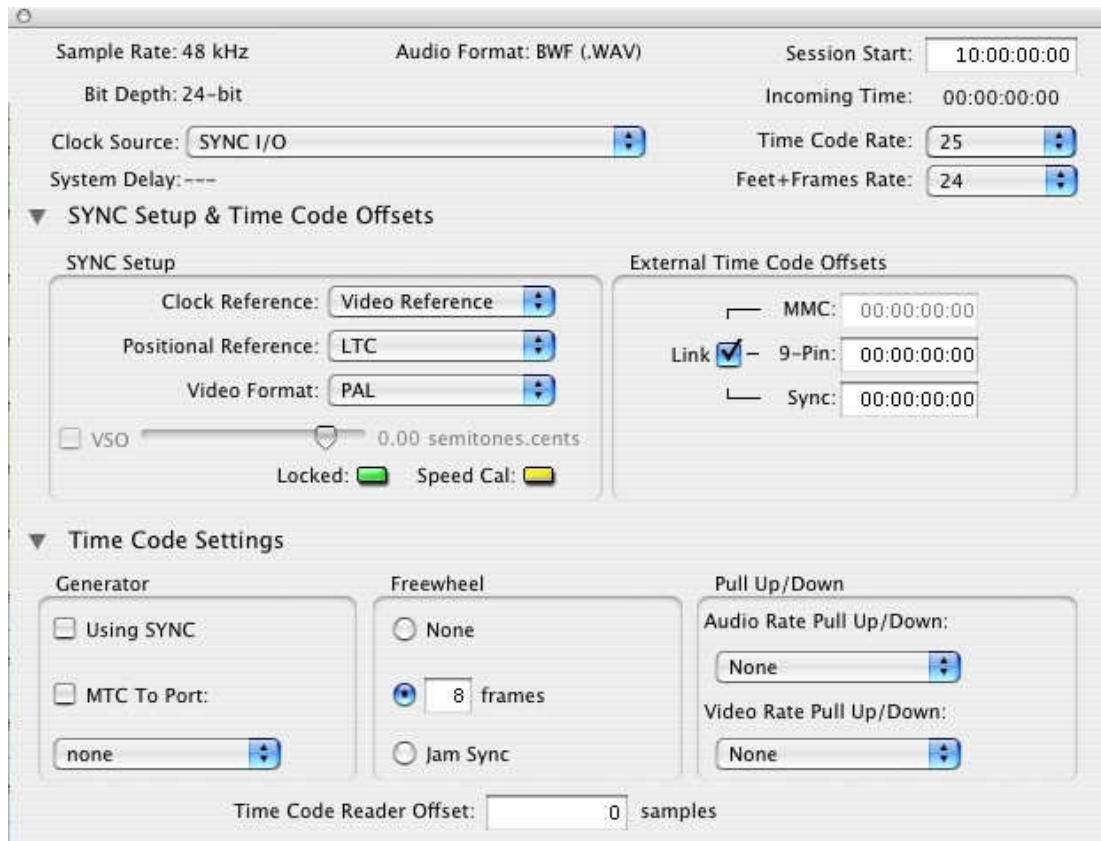
Connect the *Output* port of the PD1 to *Port A* of the USB-422 using a standard 1 to 1 9-pin cable.

# Configuring Protocols for use with the PD-1 Session Template

## Protocols Setup

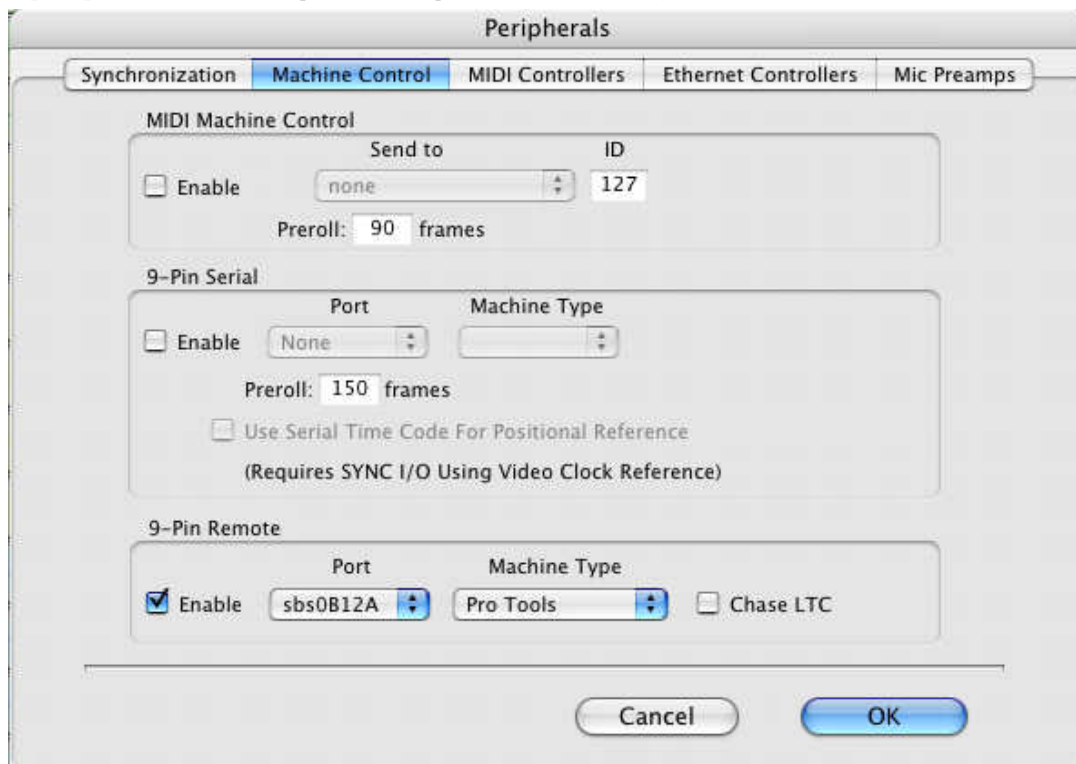
1) Open the PD-1 Template Session.

2) Open the *Setup > Session Setup* dialogue box.



- Ensure that *SYNC I/O* is chosen as the *Clock Source*.
- Choose either *PAL* or *NTSC* as the *Video Format*.
- Choose *Video Reference* as your *Clock Reference*.
- Choose the appropriate *Time Code Rate*.
- Close the dialogue box.

### 3) Open the *Setup > Peripherals* dialogue box.



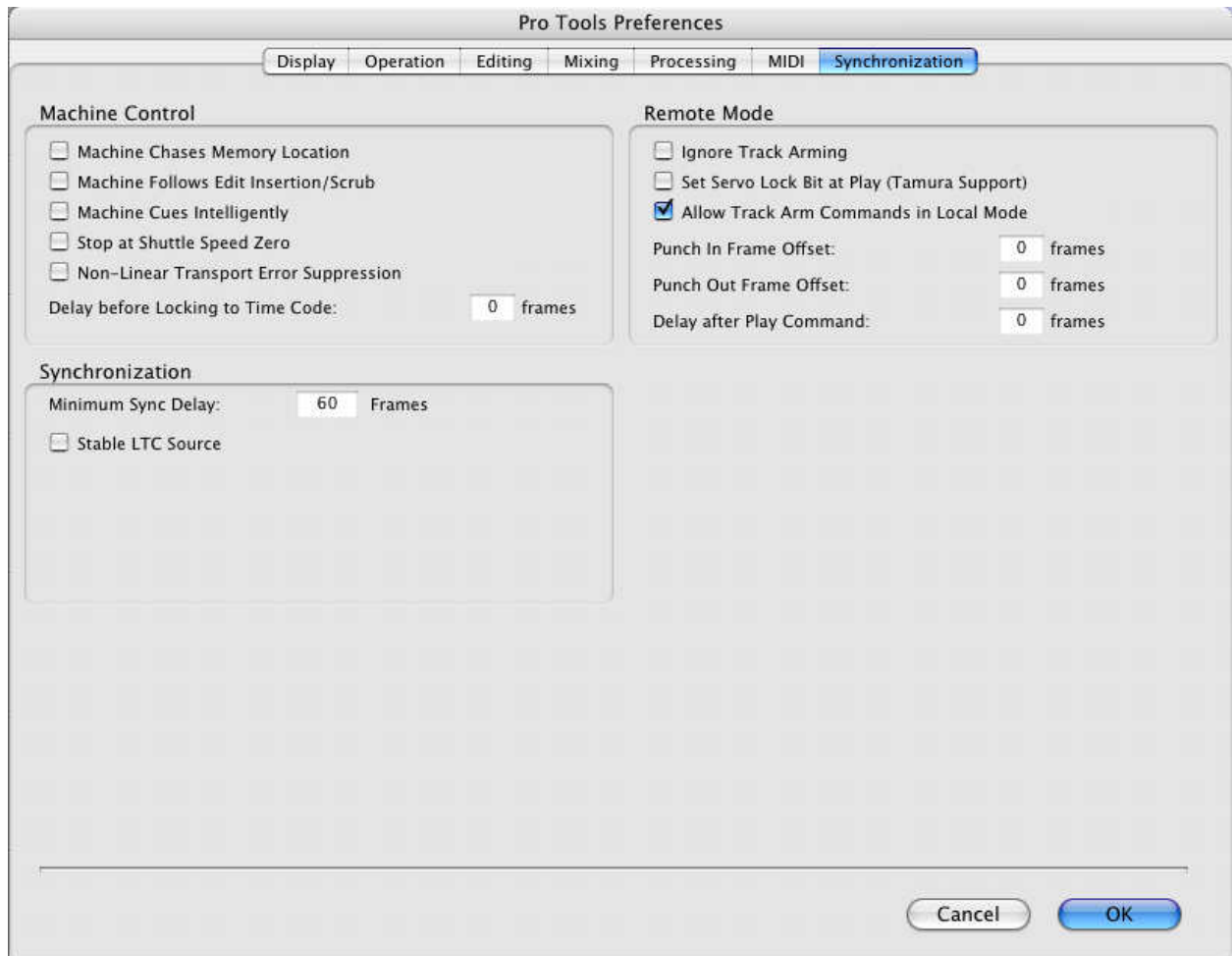
Select the *Machine Control* tab.

- In the *9-Pin Remote* section, check the *Enable* box.
- Choose Port A of the USB-422 in the *Port* drop-down menu.
- Choose *Pro Tools* in the *Machine Type* drop-down menu.
- Click *OK*.

#### 4) Open the *Setup > Preferences* dialogue box.

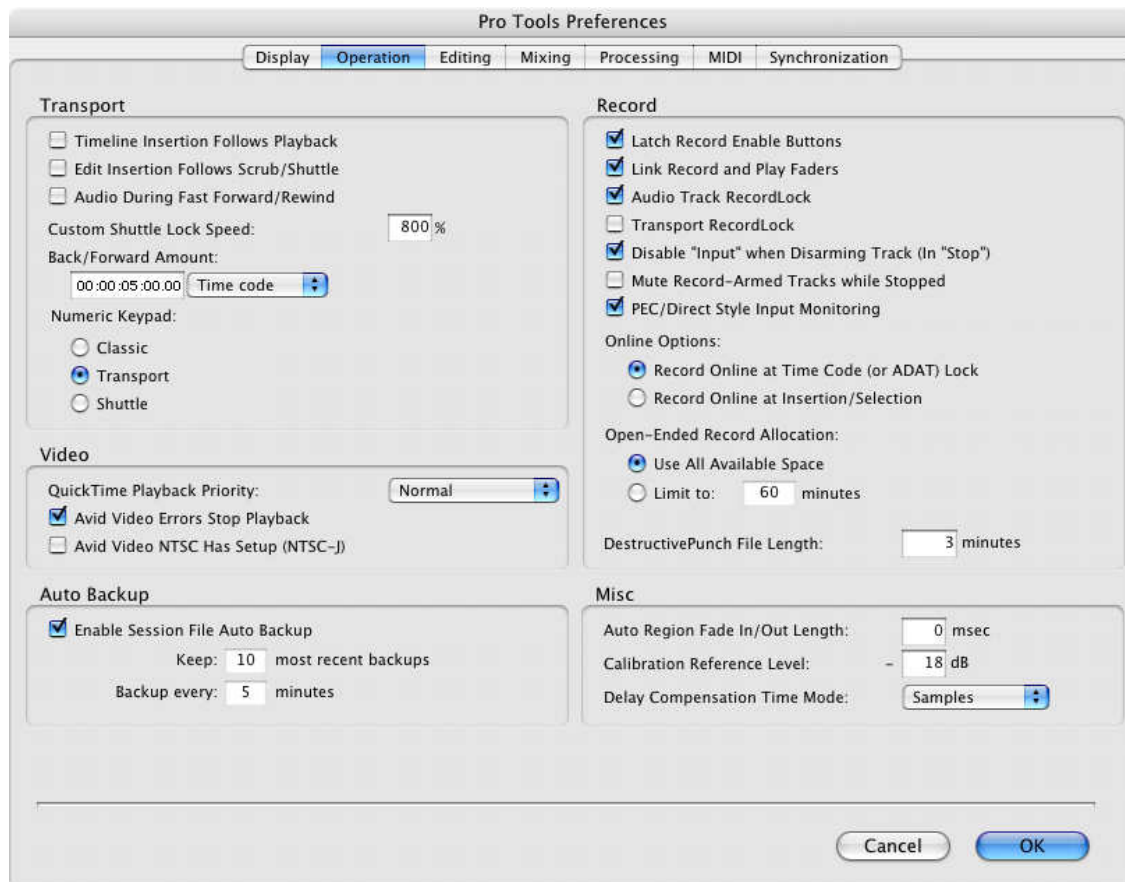
Select the Synchronization tab.

- Check the Allow Track Arm Commands in Local Mode checkbox.



Select the *Operation* tab.

- Check the PEC/Direct Style Input Monitoring checkbox.
- Check that the *DestructivePunch File Length* is appropriate.
- Click *OK*.



## Destructive Punch

- 1) Enable *Options > Destructive Punch*, and check that the *Record* key on the transport bar shows 'dp'.
- 2) Select all stem tracks.
- 3) Option-click (Mac) or Alt-click (Windows) on one of the stem tracks' *R* buttons to enable destructive punch recording. Ensure that all *R* buttons on selected tracks are blue.
- 3) Format the stem tracks by clicking on *Options > Prepare DPE Tracks*.

## Solo Safe

To allow for 'solo in-place' style operation when recording 'In the Box', solo-safe the stem tracks by Command-Option-clicking (Mac) or Control-Alt-clicking (Windows) on one of the solo buttons.

See Appendix A for screen shots of the I/O Setup and operation

**You are now ready for the PD-1 to read the Stem and Track Names**

# Configuring the PD-1 for use with the PD-1 Session Template

To read and display the track and stem names correctly the PD-1 must be set correctly. In order to do this you will need to know how to....

## Navigate the Menu

To enter the menu depress [Shift] and [Assign] simultaneously, after power on the Root Menu will always be displayed, subsequent entries into the set-up will return to the last accessed menu. To exit set-up depress [Shift] and [Assign] simultaneously.

Once in the Set-up Menu the solo keys numbered 1-8 are used to select parameter values, The [Stem ^] key is used to move up the menu tree, the [Assign v] key is used to move down the menu tree. The Root menu is at the top of the menu tree, two separate menu trees can be accessed from the root menu 'Unit' and 'Serial Out' these are accessed using the the numeric keys (Solo).

## Selecting the 24 Track Template from the PD-1 Menu

The easiest way to use the ProTools PD-1 session template is to select the example 24 Track template in the PD-1.

Enter the menu

Read the PD-1 Template	
Menu	Setting
Unit > 06-Install Template	2= 24T Name

Exit the Menu

On exiting the Menu the PD-1 will install the 24 Track Name Template. This will take approximately three seconds.

See Appendix B for definitions the 24 Track Template and the Factory Template

## Stem and Track Names

Enter the menu

Read and Assign Track and Stem Names From ProTools	
Menu	Setting
Unit > 02-Track/Stem Assign	3=Auto-Stem

Exit the Menu

After reading the stem names the display should show the following

Global 1	Prot 24	00:00:00:00	
DX	FX	MX	COMP

If you expand the Dialog stem (DX) by depressing [Stem] then [Solo 1] the the tracks that make up the Dialog stem will be displayed as follows

When displaying the tracks in a stem the stem LED is illuminated, to return to the Stem display depress the [Stem] key.

### Solo Safe

Solo Safe the Comp Stem by holding the Shift key depressed and using the Solo keys, Check that the top right of the display when shift is depressed shows "Solo= SoloSafe" if not you need to assign the shift held function first as follows

Enter the menu

Assigning the Shift held Function to Solo Safe	
Menu	Setting
Unit > 05-Shift held Function	2= Solo Safe

Exit the Menu

### Print Master

Assign the Print Master Stems by holding the Shift key depressed and using the Solo keys, Check that the top right of the display when shift is depressed shows "Solo= PrintMast" if not you need to assign the shift held function first as follows

Enter the menu

Assigning the Shift held Function to Print Master	
Menu	Setting
Unit > 05-Shift held Function	3= Print Master

Exit the Menu

### Protecting your settings

After reading the track and stem names *Unit >Track/Stem Assign* will be set to 2=*Locked*,

Enter the menu

Protecting Track/Stem Assign	
Menu	Setting
Unit > 02-Track/Stem Assign	2=Locked

Lock the Shift Held function

Locking the Shift held Function	
Menu	Setting
Unit > 05-Shift held Function	1= Offr



Exit the Menu

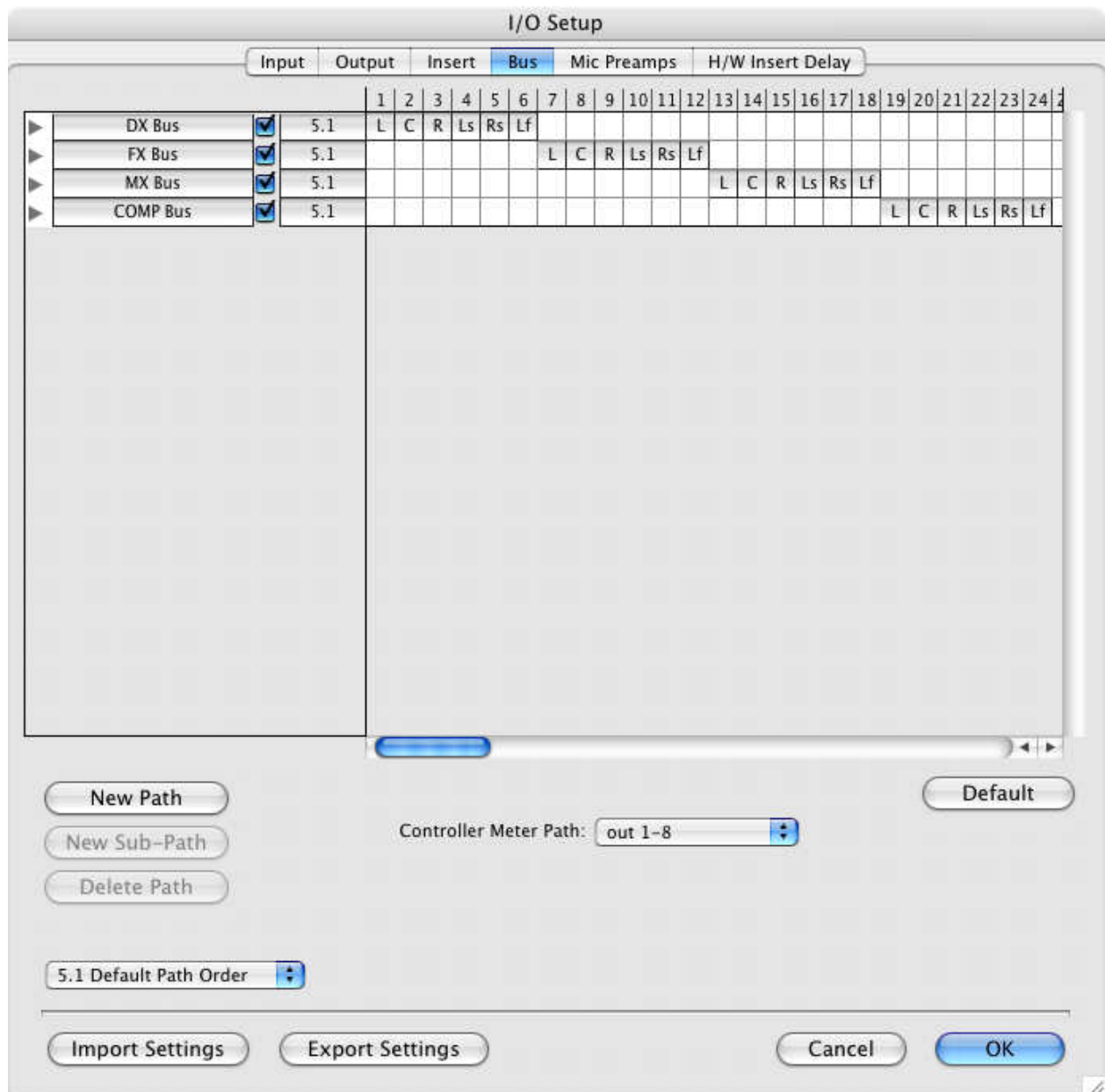
## Using the PD-1 with the RM-6

If you are using the PD-1 with the RM-6 you must tell the RM-6 on which port the ProTools record machine is connected.

RM=6 Settings when used with the PD-1	
Menu	Setting
Ext>DAW Port for PD-1	Port to which the PD-1 is connected

Note: Setting the DAW port will set the record enable on the selected port, changing the port will not remove the record enable.

## Appendix A



## Appendix B

### Template: PD-1 Configuration after leaving the menu with

Unit > 06-Set to Template set to 2= 24T Name

Menu	Setting
Unit > 02-Track/Stem Assign	2= Locked
Unit > 03-Start from Track Number	= 01
Unit > 04-Number of Tracks	= 24
Unit > 05-Shift held Function	1= Off
Unit > 06-Install Template	1= No Change
Unit > 07 Stem & Track Display	3=Track & Stem
Unit > 08 Stem & Track Name Format	5= Stem Track
Unit > 09-Number of Global Groups	1=
Unit > 10-Number of Stems	2= 4
Unit > 11-User group Contents	1= Stems only
Unit > 12-Record Keys	1= Record
Unit > 13-Link Safe to Pec/Dir keys	1=On
Unit > 14-Solo Cmd	1= Use Mute
Unit > 15-Record Safe Setting	1= Internal
Unit > 16-Wait for Lock	1= Yes
Unit > 17-After Auto-Stem	2= Lock
Unit > 18-panel type	1= Master
Unit > 19-Test/Display	1= Pos

### ProTools Specific Configuration

Menu	Setting
Serial Out > 20-Stem& Track Name Request	1= Combined
Serial Out > 21-Position	1= LTC
Serial Out > 22-Maximum Tracks per Cmd	1= 48
Serial Out > 23-Track Arm Command	1= Extended
Serial Out > 24-Record tracks	5= 24
Serial Out > 25-Command Interval	As Required
Serial Out > 26-Protocol	1= Sony

### CB Electronics

Loddonside, Lands End House, Beggars Hill Road, Charvil, Berkshire, RG10 0UD, UK

Tel +44 (0) 1189 320345 Fax +44 (0) 1189 320346

<http://www.colinbroad.com> E-mail Support@colinbroad.com