



**CB Electronics**

**PD-1**

# Programming Guide

Version 1.0





# CB Electronics

CB Electronics has made every effort to ensure the accuracy of information contained within this document, which is nevertheless supplied for information purposes only and does not constitute any form of warranty or guarantee.

All trademarks acknowledged.

The information in this document is subject to change without notice.

CB Electronics  
Loddonside, Lands End House  
Beggars Hill Road  
Charvil  
Berkshire RG10 0UD  
Tel: +44 (0)118 9320345  
Fax: +44 (0)118 9320346  
Email: [support@colinbroad.com](mailto:support@colinbroad.com)  
Tech Support: +44 (0)118 9320345  
Web: [www.colinbroad.com](http://www.colinbroad.com)



# Contents

<b>CB ELECTRONICS</b>	<b>2</b>
<b>CONTENTS</b>	<b>3</b>
FIRMWARE UPDATES	1
PROGRAMMING CONNECTION	1
PROGRAMMING PROCEDURE	2
PD-1 RECOVERY	5
PD-1 V2 SOFTWARE KEY REQUEST AND INSTALLATION	6

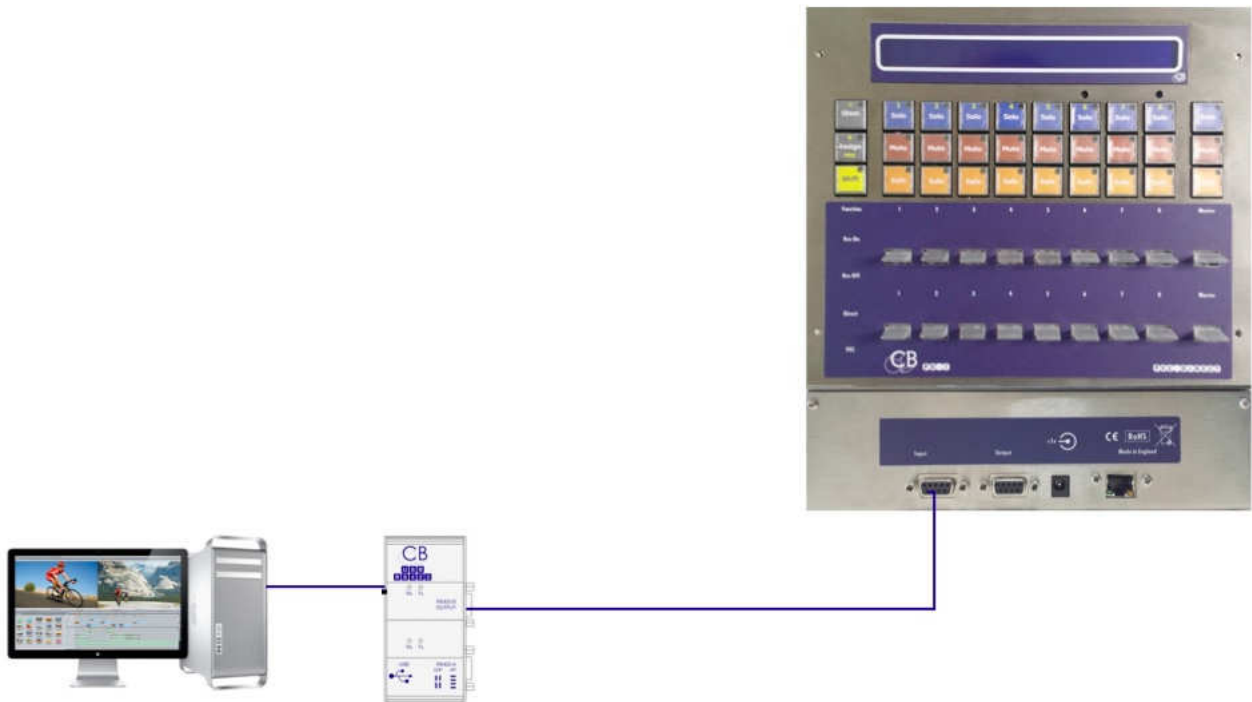
## Firmware Updates

The USB-422 supplied with the PD-1 is used to update the PD-1 firmware connect the USB-422 output port to the PD-1 input port as show in the diagram below. RS422 Input port is used to update the PD-1. You may need a driver for the USB-422 if you are using a different computer. Firmware updates are posted on the appropriate product page:

PD-1- - <http://www.colinbroad.com/cbsoft/pd1/pd1.html>

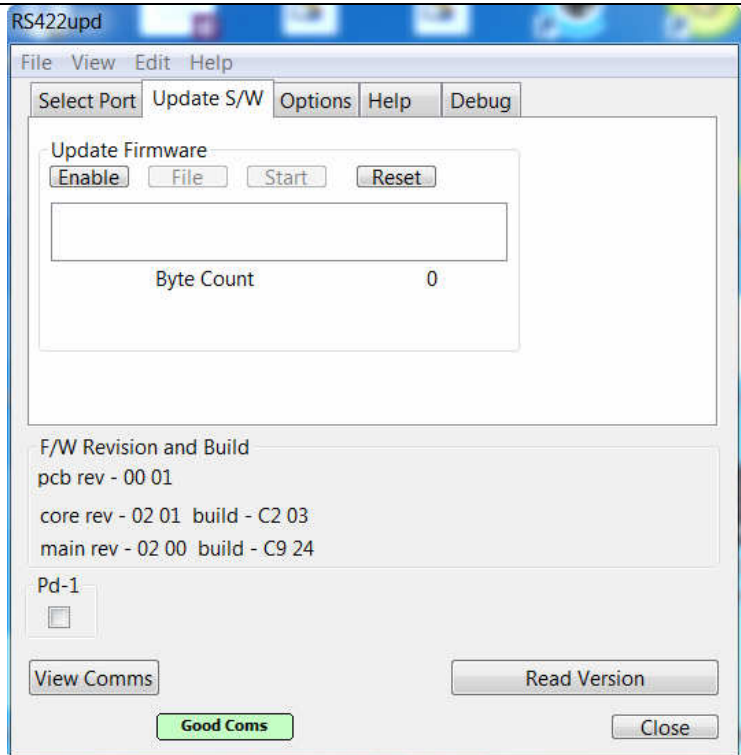
There are two different programming algorithms depending on the PD-1 core software. The instructions blow describe how to discover the version and setup correctly. You will find both a Mac and Windows version of "RS422updon the same page.

## Programming Connection

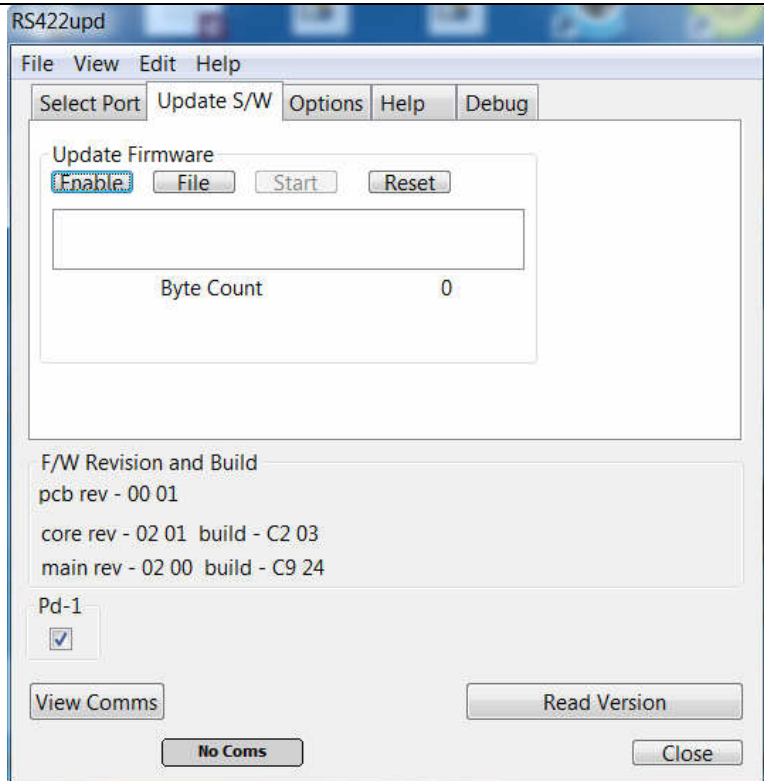


# Programming Procedure

Opening Screen showing selected RS422 port. After reading the Version. Note the Green Good Com s indicator.



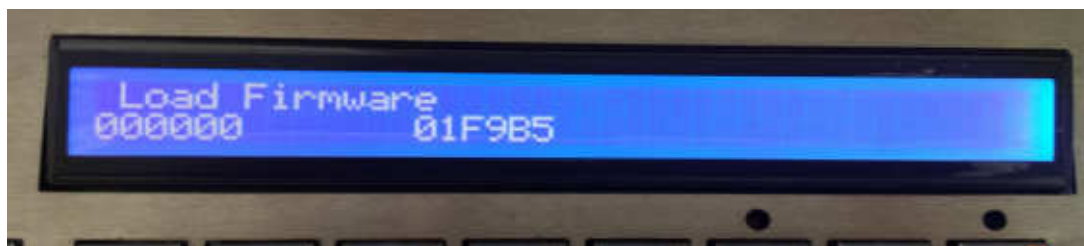
Click on enable to discover the correct programming algorithm. Look at the PD-1 Display to check if the box should be ticked or Not



Pd-1



New PD-1 in programming mode, the PD-1Box NOT ticked



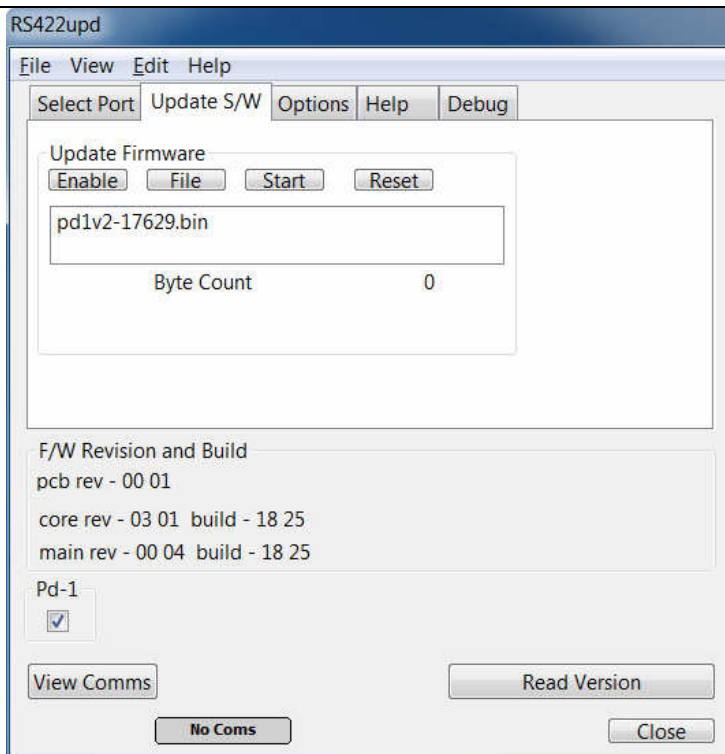
Pd-1



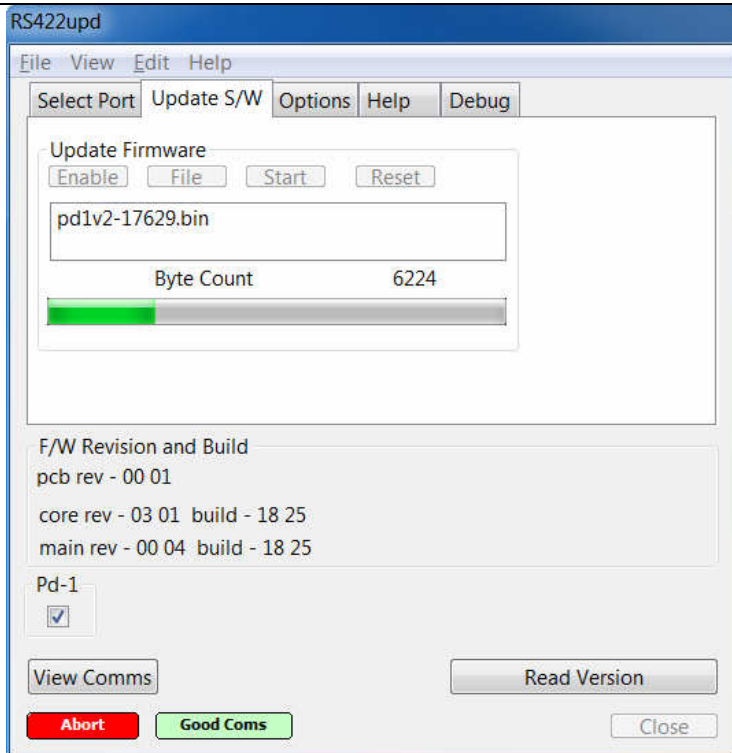
Old PD-1 in programming mode, PD-1 box must be ticked!1



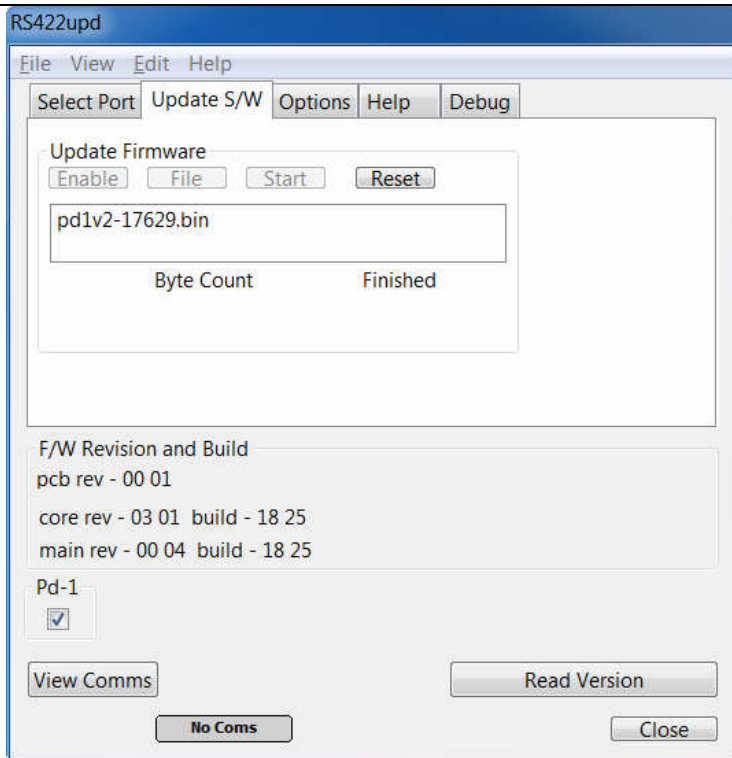
Programming Screen after enable and file selection. The firmware files can be posted as a zip file, if they are extract the .bin file before use.



Click Start, the progress bar will run and the byte count on both the PD-1 and RS422upd will increment



When Finished Click on reset to restart the PD-1, if you program with the wrong software or have a problem you can use the recovery mode as described below.



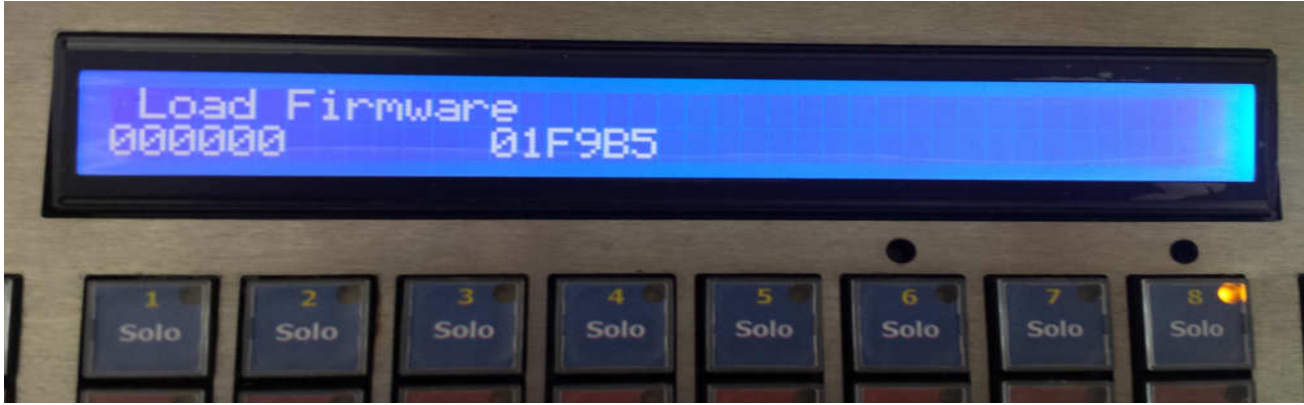
## PD-1 Recovery

In the case of power failure or other problems when updating the PD-1 firmware.

1. Abort and exit from "RD422upd"
2. Disconnect the Power then reconnect whilst depressing [Stem] and [Assign]. The Software Download screen will be displayed as below.
3. Restart "RD422upd". You may need to re-select the correct port.
4. Check the display to see if the PD-1 box should be ticked


**Pd-1**

New PD-1 in programming mode, the PD-1Box NOT ticked



**Pd-1**

Old PD-1 in programming mode, PD-1 box must be ticked!



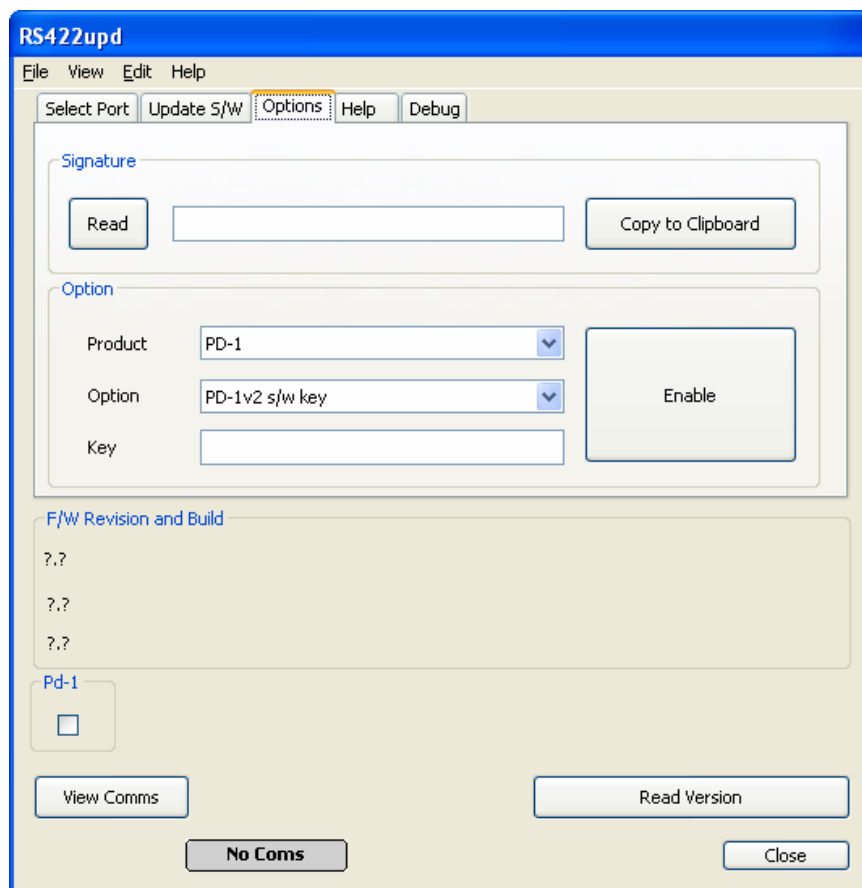
5. Program the PD-1 as normal



## PD-1v2 Software Key Request and Installation

When you install PD-1v2 software it will work for about a week before needing a software key. At this point the LCD will display “No PD2 License”. The trial period can be extended one time only.

- 1) Connect RS433upd to the PD-1 as normal
- 2) Select the option page
- 3) Read the Signature and email to [sales@colinbroad.com](mailto:sales@colinbroad.com) with a request. For a permanent key make payment by paypal or credit card available on the PD-1 web page. <http://www.colinbroad.com/cbsoft/pd1/pd1.html>
- 4) You will receive a key once payment has been received or an extension by return.



- 5) Select the Product and Option required
- 6) Enter the supplied key – copy and paste works well
- 7) Click on Enable to install key