



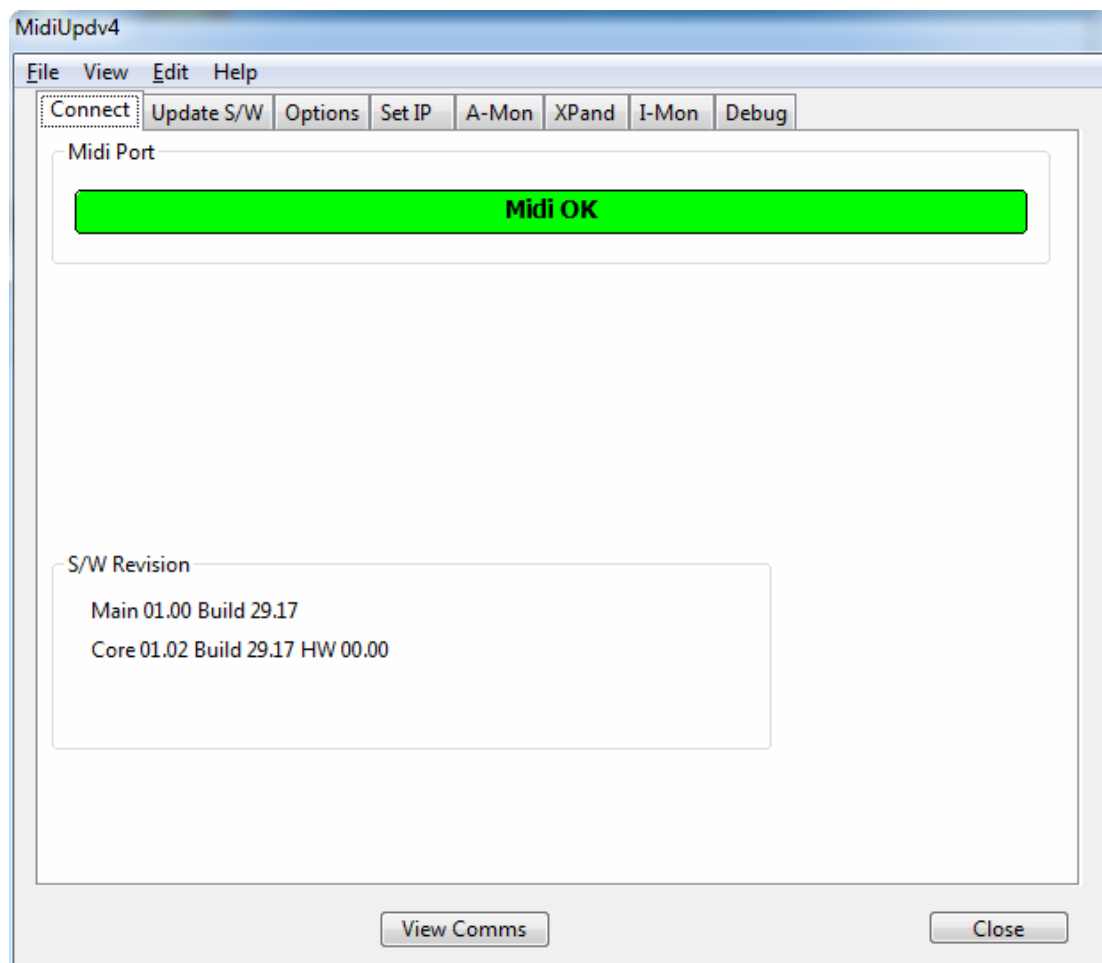
CB Electronics

MidiUpd

TC-5, TMC-1, A-Mon, XPand, I-Mon

Programming Guide

Version 2.0





CB Electronics

CB Electronics has made every effort to ensure the accuracy of information contained within this document, which is nevertheless supplied for information purposes only and does not constitute any form of warranty or guarantee.

All trademarks acknowledged.

The information in this document is subject to change without notice.

CB Electronics
Loddonside, Lands End House
Beggars Hill Road
Charvil
Berkshire RG10 0UD
Tel: +44 (0)118 9320345
Fax: +44 (0)118 9320346
Email: support@colinbroad.com
Tech Support: +44 (0)118 9320345
Web: www.colinbroad.com



Contents

CB ELECTRONICS	2
CONTENTS	3
FIRMWARE UPDATES	1
I-MON, A-MON AND XPAND PROGRAMMING INDICATON	5
TC-5 RECOVERY	9
TMC-1 RECOVERY	9
II-MON, A-MON AND XPAND RECOVERY MODE	10



Firmware Updates

The USB Port is used to update the TC-5, TMC-1, I-Mon, A-Mon and XPand firmware. You should not need a driver as it uses a standard Midi Interface. Firmware updates are posted on the appropriate product page:

TC-5 - <http://www.colinbroad.com/cbsoft/tc-5/tc-5.html>

TMC-1-XMon - <http://www.colinbroad.com/cbsoft/tmc1/tmc1.html>

TMC-1-Penta - <http://www.colinbroad.com/cbsoft/tmc1/tmc1penta.html>

TMC-1-DMon - <http://www.colinbroad.com/cbsoft/tmc1/tmc1dmon.html>

A-Mon and TMC-1-AMon - <http://www.colinbroad.com/cbsoft/amon/amon.html>

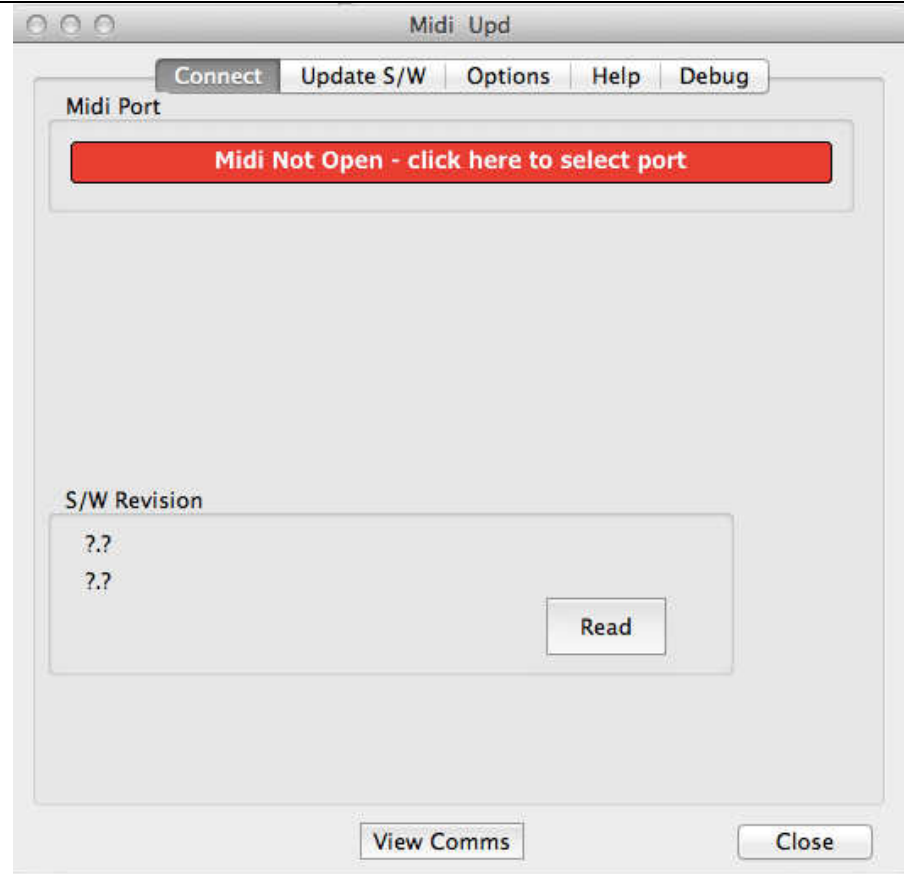
XPand - <http://www.colinbroad.com/cbsoft/amon/xpand.html>

I-Mon - <http://www.colinbroad.com/cbsoft/imon/imon.html>

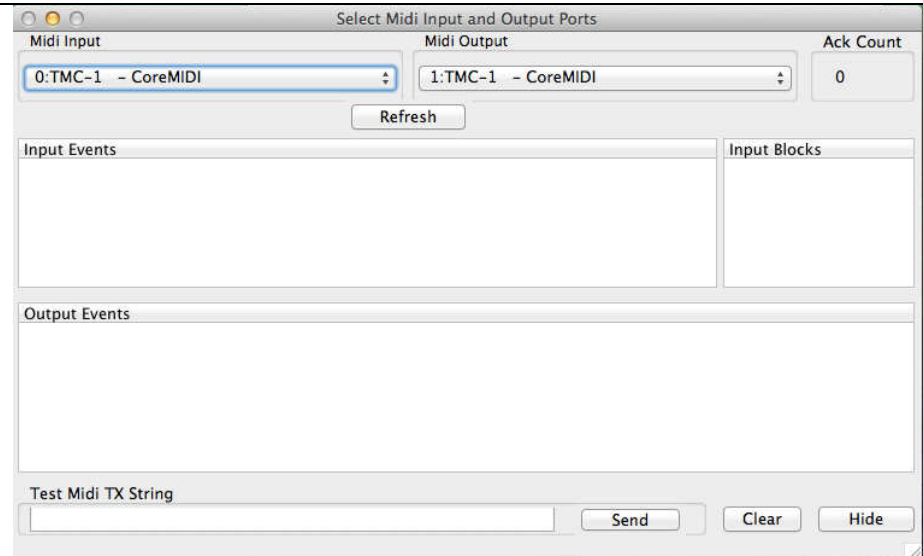
You will find both a Mac and Windows version of "midiupd" in the zip file which should be used to send firmware updates to any of these products.

Midiupd includes a help screen; you can find screen shots below

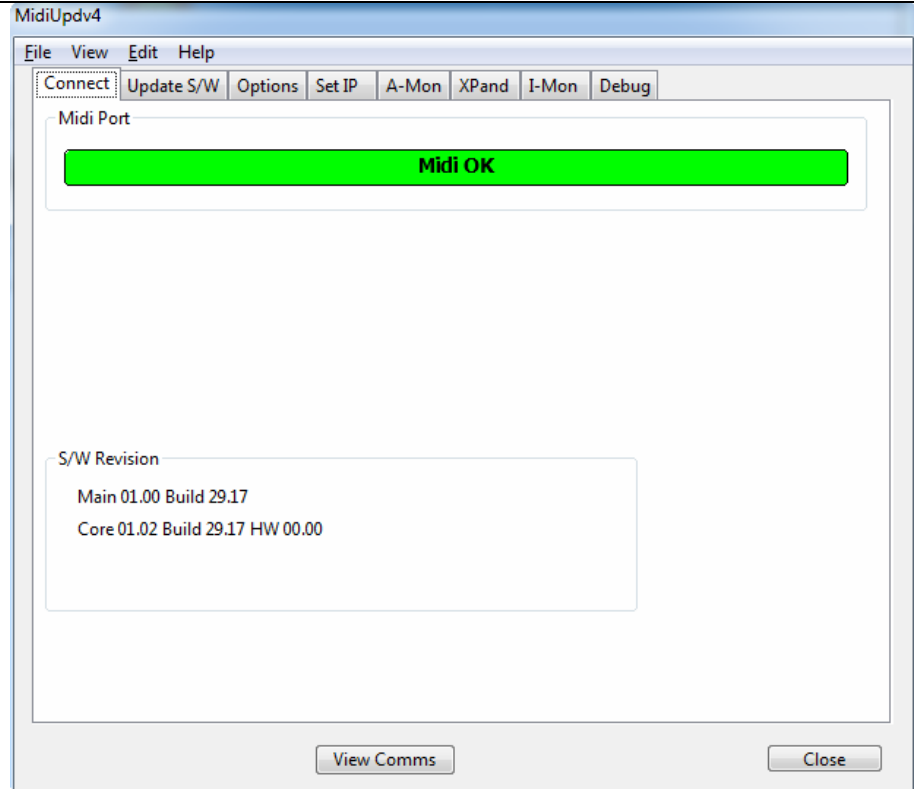
Opening Screen if Midi ports not found



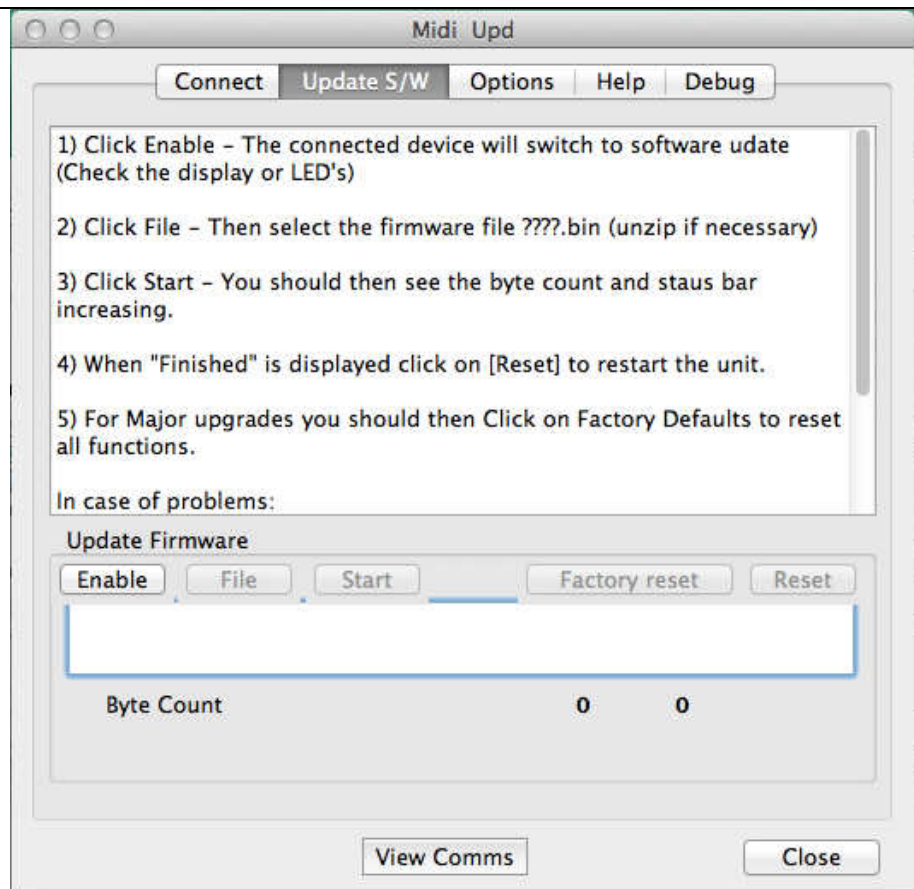
Input port selection screen with TMC-1 input and output screens.



Opening screen with Midi ports selected. The Read key has been clicked to check the current software revision



Programming Screen



TC-5

The 7 Segment Display
."UPd.ProG"

TMC-1

TMC-1 screen after
[Enable] clicked.

I-Mon, A-MON & XPAND

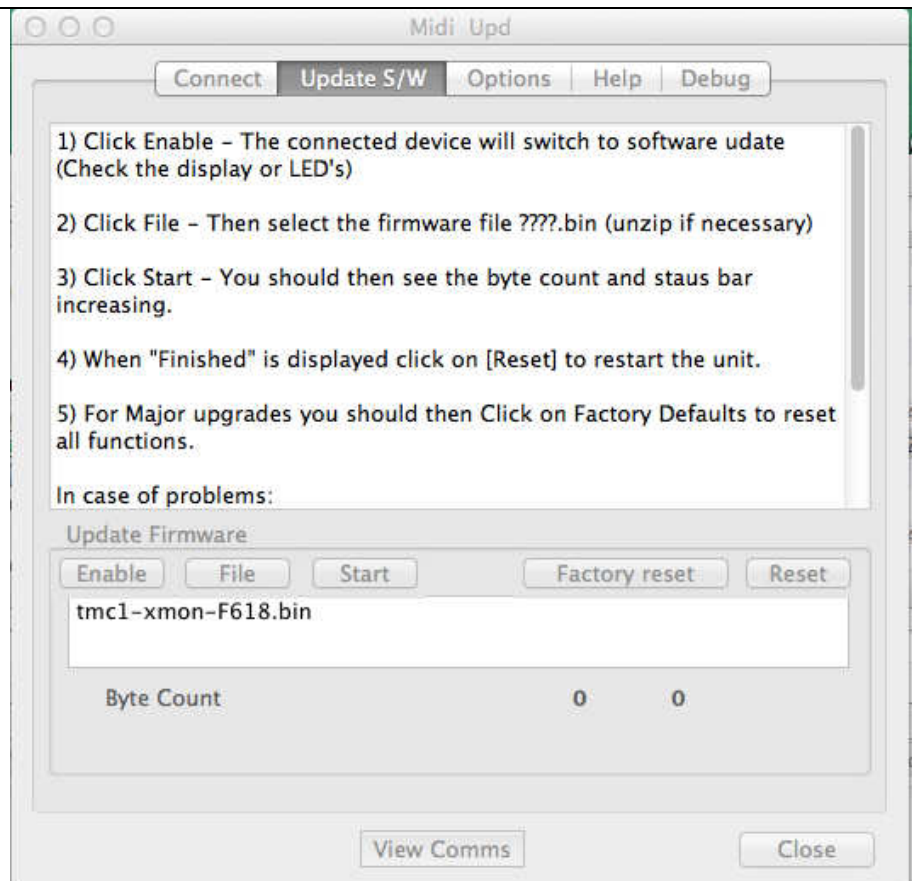
On the I-Mon, A-Mon
and XPand the Mute LED
will Flash approximately
once per second – Ready
to program

Core build: 23/12/2014
Software Download: \$000000
Ready to Update

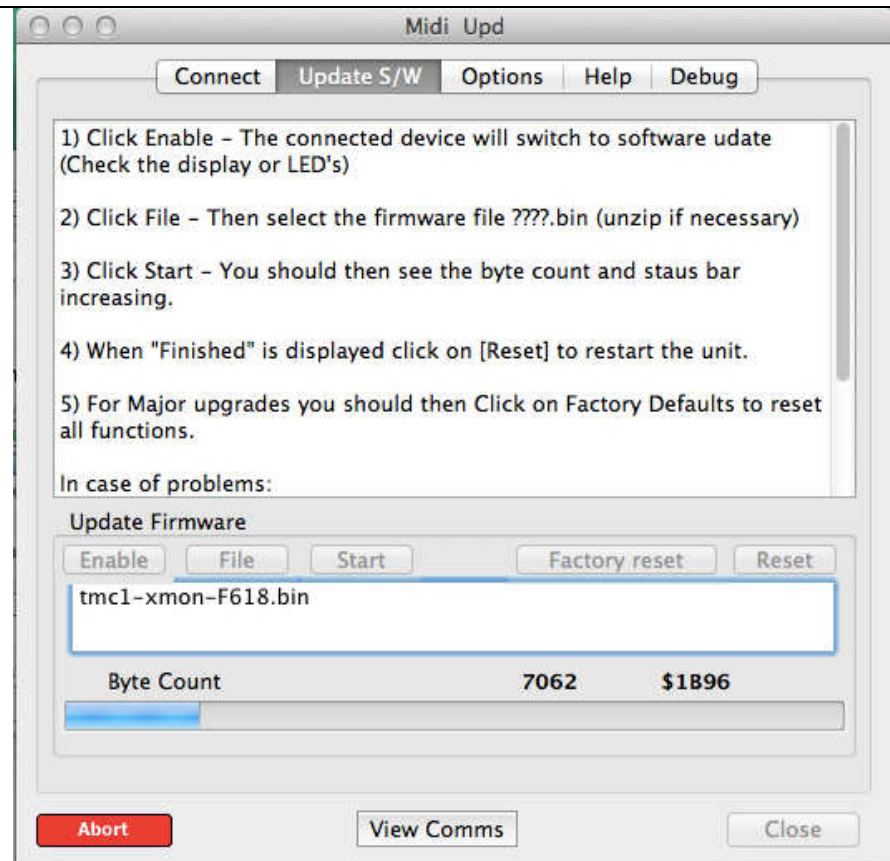
flashpage	02F2 00 00
flashmode	02F6 00
flashtest	02F7 00
pageofst	02F0 00 00

TMC-1 Display

The firmware files are
posted as a zip file; You
should extract the .bin file
before use.



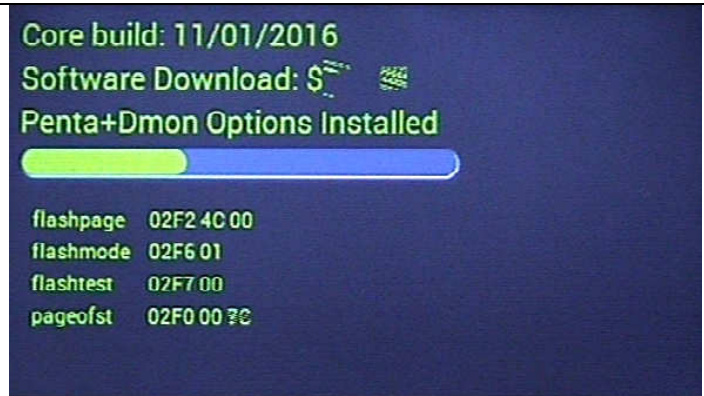
Programming



TMC-1 Programing Indication

Note: the progress bar on the TMC-1 shows the total memory space available and will not reach the end.

The Progress bar on "midiupd" shows the update length and will be cleared once finished



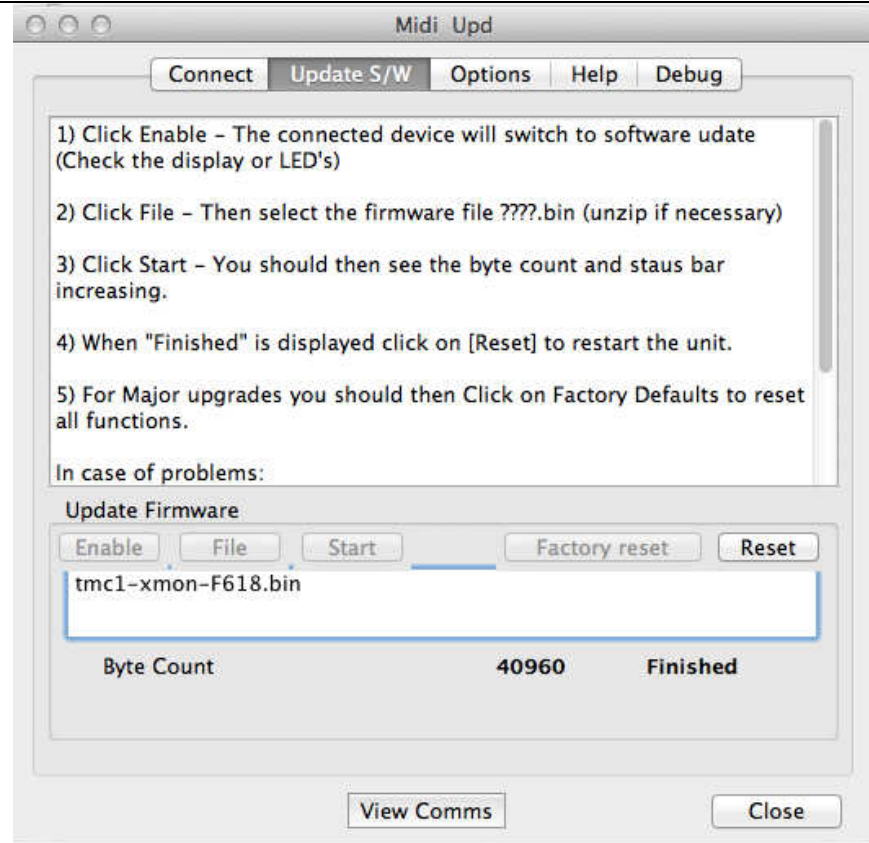
I-Mon, A-Mon and XPand programming Indicaton

The Mute LED is used to indicate the Programming mode as follows

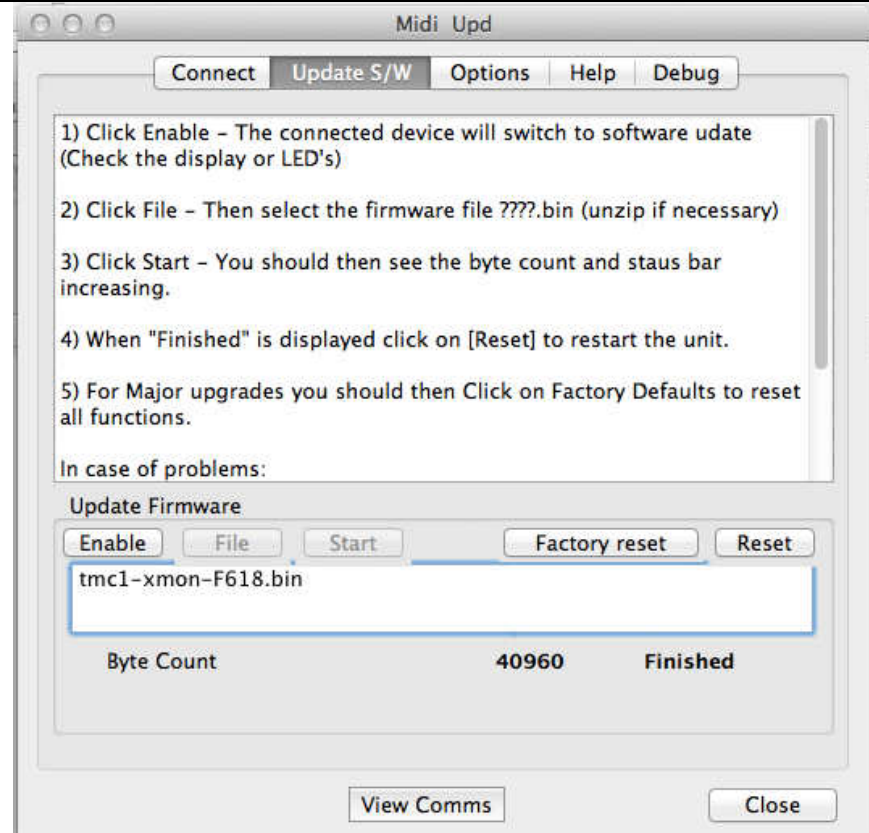
- Mute LED Flashing approximately once per second – Ready to program
- Mute LED Flashing approximately twice per second – Programming
- Mute LED Flashing approximately once per two seconds – Finished programming

Finished,

Now depress [Reset]

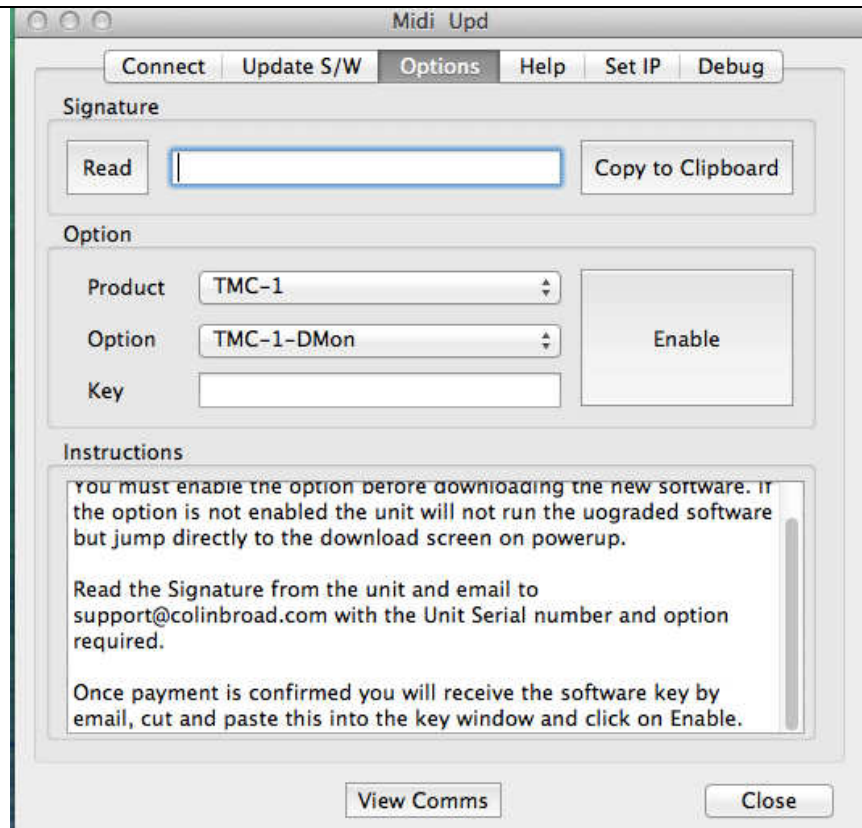


For Major upgrades you should now reset to factory defaults and then setup the User keys and menu options.

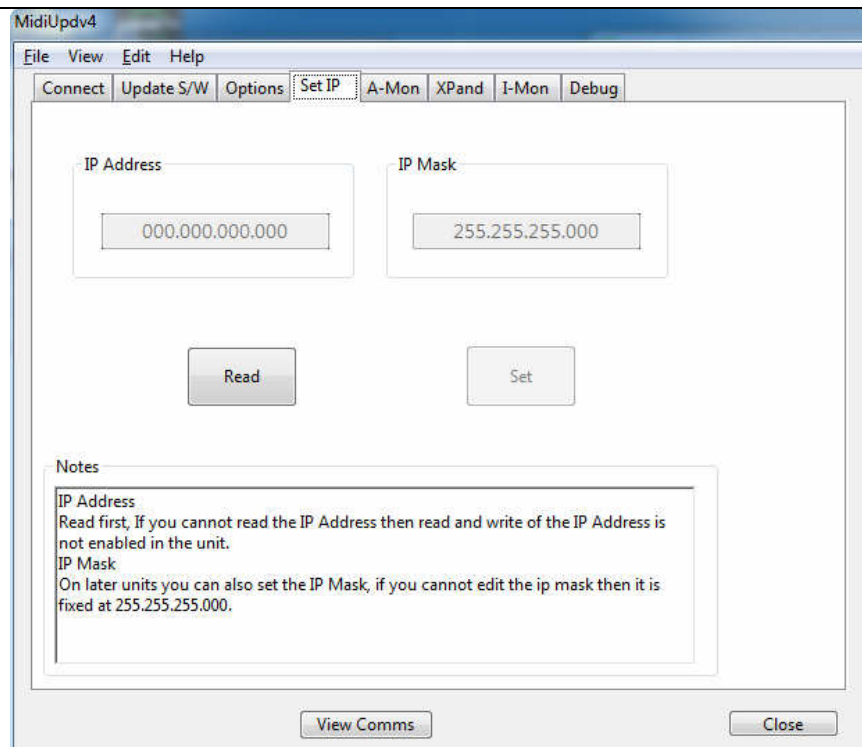


Where the TMC-1 has a Ethernet port fitted a upgrade may be purchased to upgrade to TMC-1-Penta or TMC-1-DMon software. To obtain the key use midiupd to read the signature and send with the serial number to support@colinbroad.com.

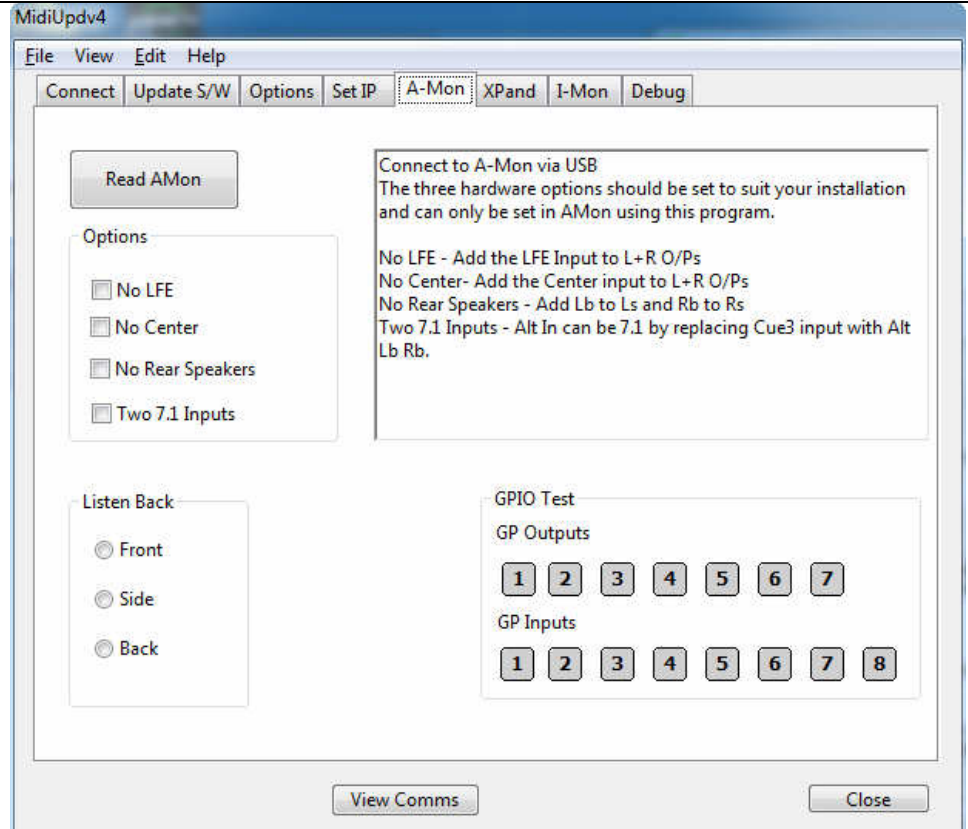
Without the correct key the software will not run. TMC-1-XMon and TMC-1-AMon software does not require a key.



The Set IP page is used to set the IP address and IP Mask on the TMC-1



The A-Mon page is used to setup special options on the A-Mon



MidiUpdv4

File View Edit Help

Connect Update S/W Options Set IP **A-Mon** XPand I-Mon Debug

Read AMon

Options

- ☐ No LFE
- ☐ No Center
- ☐ No Rear Speakers
- ☐ Two 7.1 Inputs

Listen Back

- ☐ Front
- ☐ Side
- ☐ Back

GPIO Test

GP Outputs

1 2 3 4 5 6 7

GP Inputs

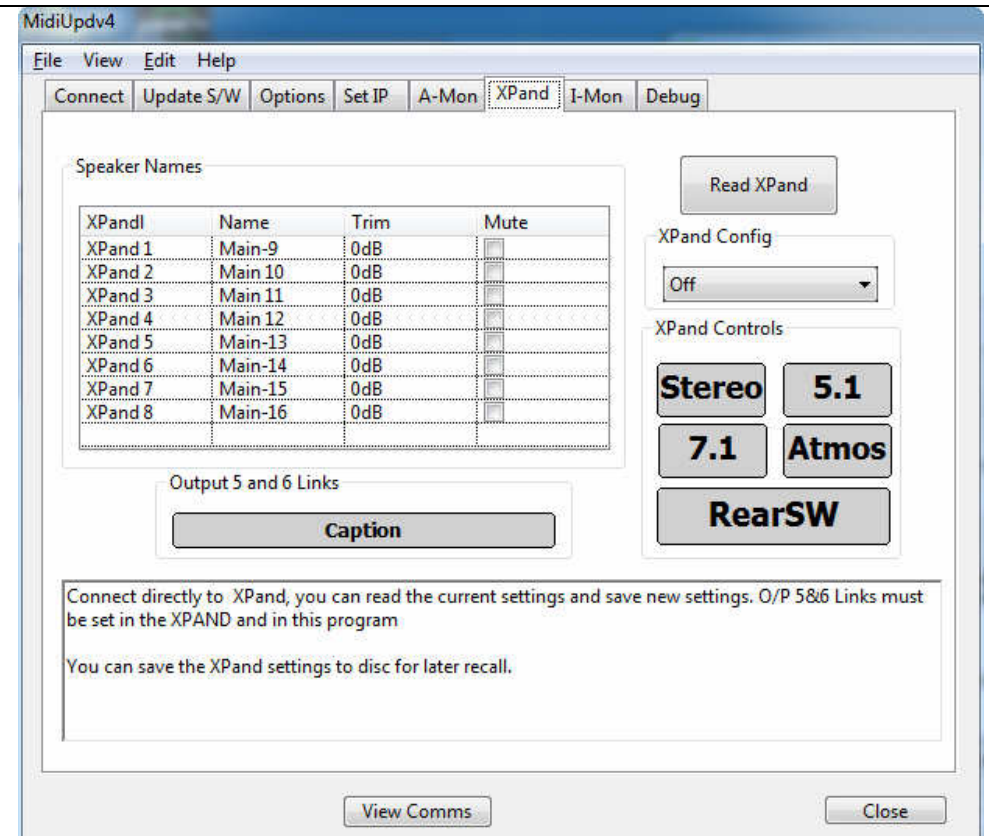
1 2 3 4 5 6 7 8

View Comms **Close**

Connect to A-Mon via USB
The three hardware options should be set to suit your installation and can only be set in A-Mon using this program.

No LFE - Add the LFE Input to L+R O/Ps
No Center - Add the Center input to L+R O/Ps
No Rear Speakers - Add Lb to Ls and Rb to Rs
Two 7.1 Inputs - Alt In can be 7.1 by replacing Cue3 input with Alt Lb Rb.

The XPand page is used to configure the XPand



MidiUpdv4

File View Edit Help

Connect Update S/W Options Set IP A-Mon **XPand** I-Mon Debug

Speaker Names

XPand1	Name	Trim	Mute
XPand 1	Main-9	0dB	<input type="checkbox"/>
XPand 2	Main 10	0dB	<input type="checkbox"/>
XPand 3	Main 11	0dB	<input type="checkbox"/>
XPand 4	Main 12	0dB	<input type="checkbox"/>
XPand 5	Main-13	0dB	<input type="checkbox"/>
XPand 6	Main-14	0dB	<input type="checkbox"/>
XPand 7	Main-15	0dB	<input type="checkbox"/>
XPand 8	Main-16	0dB	<input type="checkbox"/>

Output 5 and 6 Links

Caption

Read XPand

XPand Config

Off

XPand Controls

Stereo **5.1**

7.1 **Atmos**

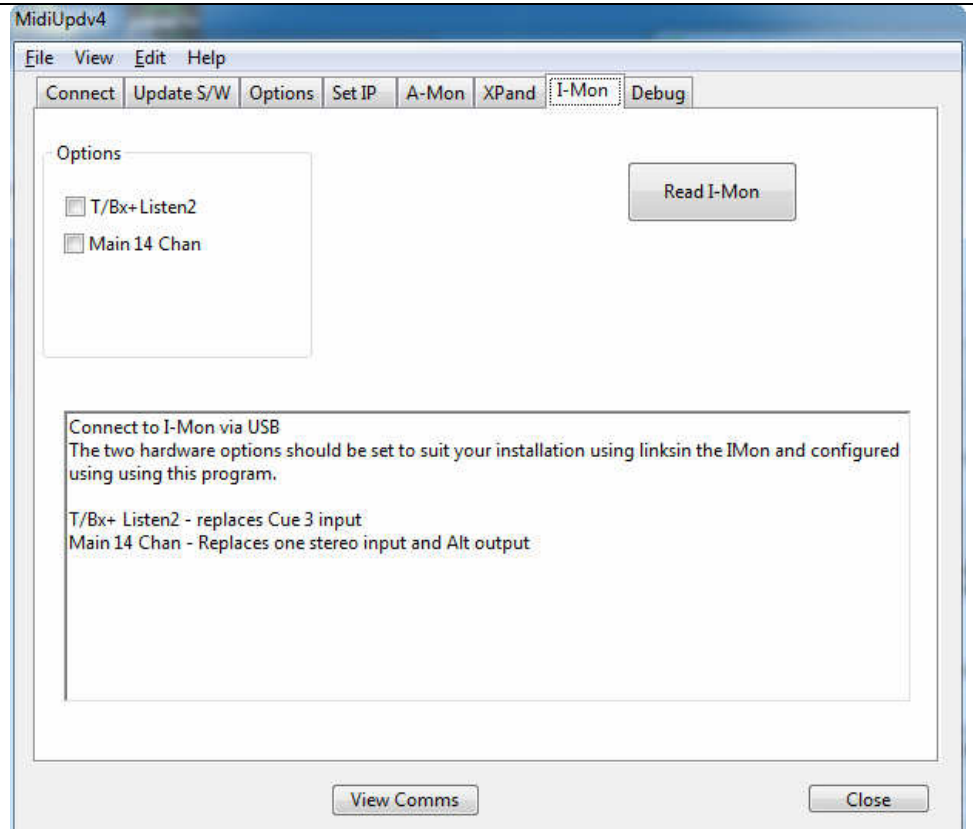
RearSW

Connect directly to XPand, you can read the current settings and save new settings. O/P 5&6 Links must be set in the XPAND and in this program

You can save the XPand settings to disc for later recall.

View Comms **Close**

The I-Mon page is used to configure the I-Mon software to match the link positions



TC-5 Recovery

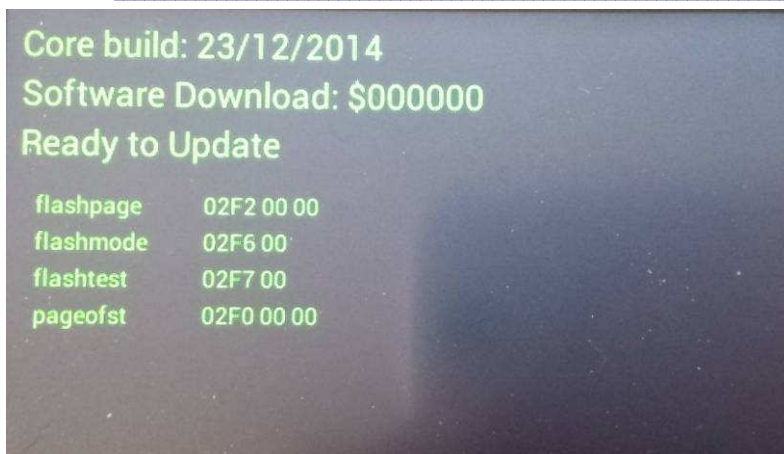
In the case of power failure or other problems when updating the TC-5 firmware.

1. Abort and exit from "midiupd"
2. Unplug the USB then reconnect whilst depressing [/] and [>]. "UPd.ProG" Download will be displayed in the TC-5 7 Segment Display.

TMC-1 Recovery

In the case of power failure or other problems when updating the TMC-1 firmware.

3. Abort and exit from "midiupd"
4. Unplug the USB then reconnect whilst depressing [Select] and [Ctrl]. The Software Download screen will be displayed.



5. Restart "midiupd". You will need to select the CBCore MIDI ports

II-Mon, A-Mon and XPand Recovery Mode

If for any reason there is a problem when reprogramming (eg. Power Failure) a recovery mode is provided.

To enter recovery mode, disconnect the power for at least 5 seconds, then reconnect with the Mute key depressed. You will need to reselect the USB port used by MidiUpd.

The Mute LED will flash at approximately 1 second intervals to indicate that the device is ready to program.