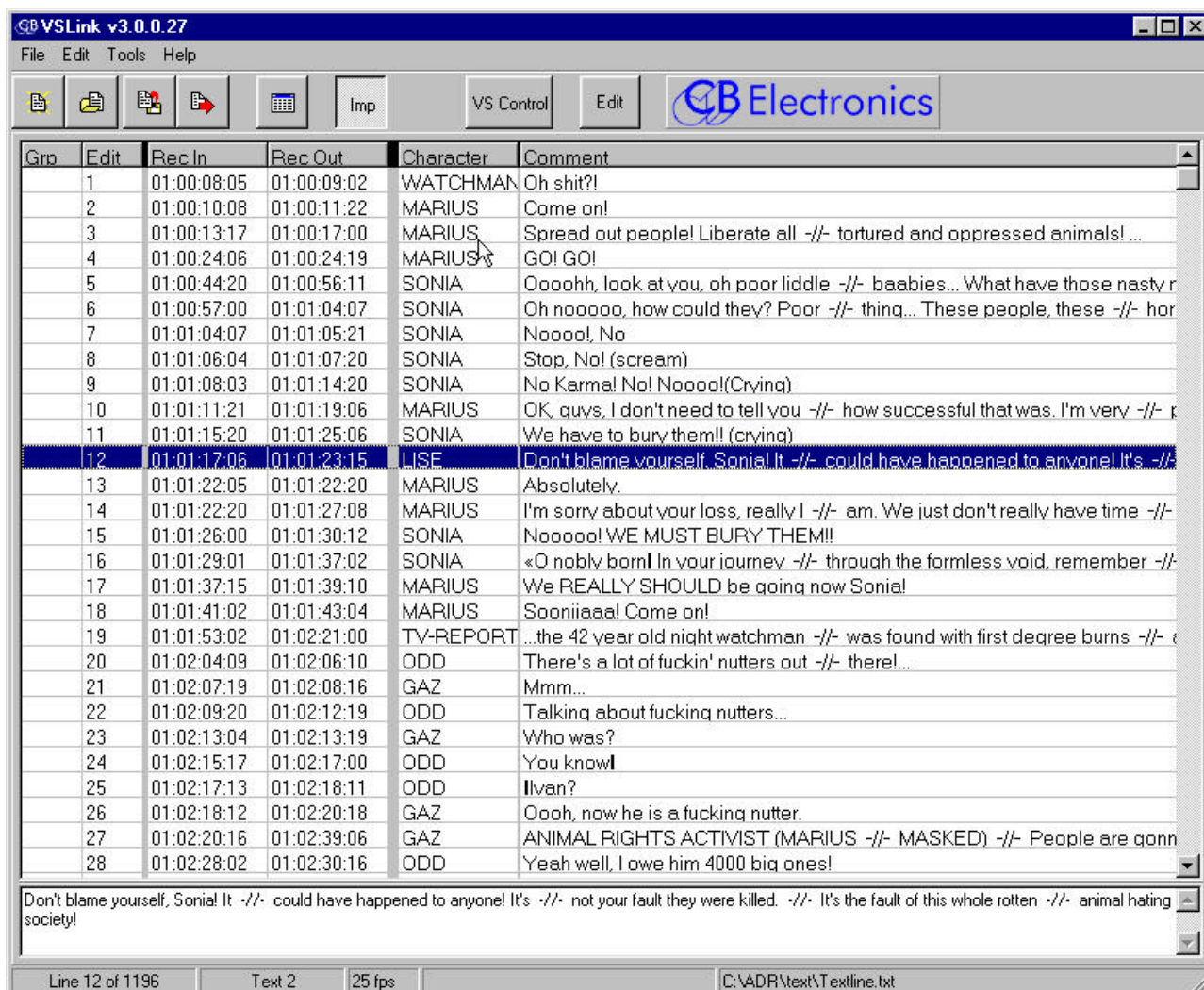


VSLink-2: Cue List Import, Management and Download

Multiple input formats Text, EDL, Wintaker, Text, and ADR-Taker
 Specialized Text Filters Text, Text2, Character Name Files
 Two Output Formats VS-Link and MR-ADR
 Windows Software Tested on 95, 98, 2000, NT
 Sort Loop Number, Time or Character Name
 Global Timecode Manipulation Open in, Open out, Conform
 Video Streamer Control Panel Add Cue, Delete Cue, Modify Cue, Video Standard
 Timecode Capture Using Video Streamer Reader



Installation

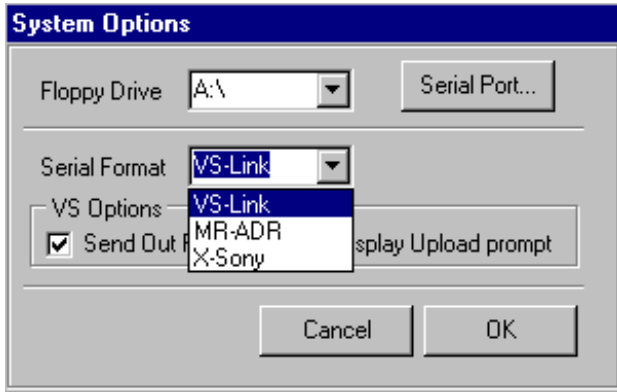
The software may be downloaded from our website www.colinbroad.com on installation there is a 30 day trial period, after this it is necessary to purchase a software key.

To Install

- 1) Download vslink2.zip, unzip to a temporary directory eg. C:\temp
- 2) From Start Menu choose Run
- 3) Type C:\temp\setup
- 4) press [Enter]

Selecting the Output Protocol

To select the output protocol use: **Tools | Options | Serial Format**



VSLink 2 is designed to communicate with different CB products, because of this three different serial output protocols are provided

- 1) **VS-Link**: Direct connection with the Video Streamer.
- 2) **MR-ADR**: Connection with the existing ADR system
- 3) **X-Sony**: New Protocol still in Beta-Test

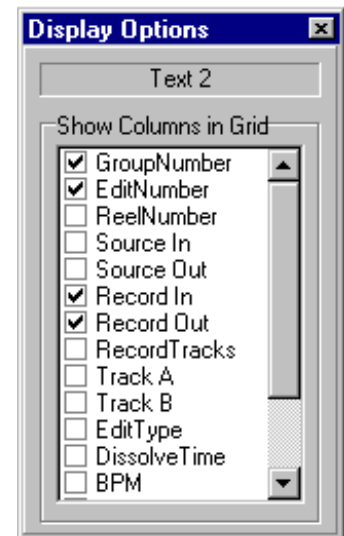
The default serial port is com1, to use an alternative port click on the Serial Port key, this will reset the current assignment, you can then select a valid serial port on the next download.



Selecting Grid Display Options

The display grid may be customised using the display grid key.

When the Grid control panel is displayed individual display columns may be enabled/disabled. Each data input format contains different information. Not all of this information is required the user may select what information he needs. Note that normally the Record In time is sent to the streamer, an option allows both the Record In and Record Out to be sent.



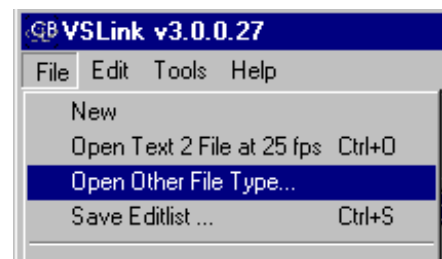
Importing files

To import a file use

File | Open Current File Format

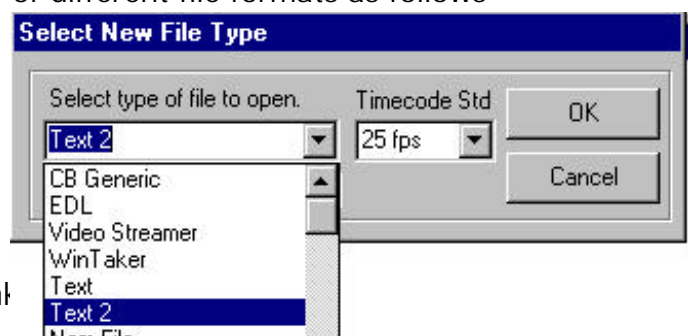
or

File | Open Other File Type



The VSLink program can accept a number of different file formats as follows

- 1) **CB Generic**: an internal record based format, if you save a file it will be saved in this format.
- 2) **EDL**: import from CMX and other EDL files



- 3) **Video Streamer**: files saved from the Video Streamer using the previous version of VSLink.
- 4) **Wintaker**: Future Equipment Group Wintaker files, also used to import other formats see below.
- 5) **Text**: Text files with embedded timecode numbers, if out times are included then both in and out times on the same line.
- 6) **Text 2**: Text files with embedded timecode numbers, in and out times on separate lines.
- 7) **Nam File**: Character file produced by previous CB Electronics DOS based ADR Software
- 8) **CB Log File**: ADR Logging file produced by the CB ADR system
- 9) **ADR-Taker**: Output file from CB ADR Taker software
- 10) **Tab Text 1**: Tab Delimited Text File (In, Out, Comment, Edit)
- 11) **Tab Title**: Tab Title Text File (Use title line to define fields)
- 12) **Tab Text 3**: Edit, Char, In, Out, Comment
- 13) **Tab Text 4**: Edit, In, Out, Char, Comment
- 14) **Tab Text 5**: Edit, In, Char, Comment, Out
- 15) **Tab Text 6**: Edit, Char, In, Comment, Out

Importing other file types

The following file types found in Germany may also be used by first importing them to WinTaker format:

- 1) Edicom 1, 2) Edicom 2, 3) Giese 1000, 4) Steenbeck, 5) AVG File

To run a suitable file conversion program use

Tools | Import To Wintaker Format

Text File Filters

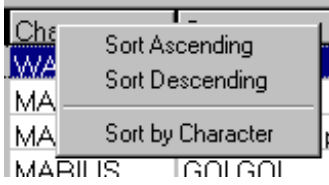
When a customer arrives with a word processor, or spreadsheet file it should be saved to disk as simple text file. You can then import the file using the Text or Text2 filters.

Filtering text files can allow extraction of Character name as well as timecode values. Currently if the character name has no spaces and is on it's own line then it will be detected and the user asked to confirm that it is a character name. A character list is built and saved to disk.

Once the list is loaded check for errors, edit the original text file and re-import the list. The character file is used to check the character names, any names recognised are automatically used. The character file is a text file and may be modified using a normal text editor. The user can generate his own character file 'Character.Txt' before importing the list using a text editor. By keeping different projects in different files the same character file may be used for a series where the same characters re-appear in different episodes.

CB Electronics is working on improving these filters, if you have a problem file e-mail it to us and we will see what can be done.

Sorting the List



To sort by any column, point to the column and right click with the mouse, you then have a choice of sort in ascending or descending order. The character sort option allows you to chose which characters you want at the top of the list. To generate a character list in ascending time order, first sort by time then by character.



Video Streamer Control

When using with a Video Streamer directly the Video Streamer Control panel may be used for the following functions



Streamer Cue Control Panel



Previous Streamer Cue



Next Streamer Cue



Next cue timecode display

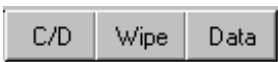


Delete Cue

Insertion Control Keys



Enable/Disable All insertions

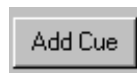


Enable Count Down, Wipe and Enable Data Line Insertion

New Cue Panel



New Cue Data



Entry Add cue to Streamer and List

Bottom key panel



Capture current reader timecode to streamer and List



Copy current streamer list to file without updating screen



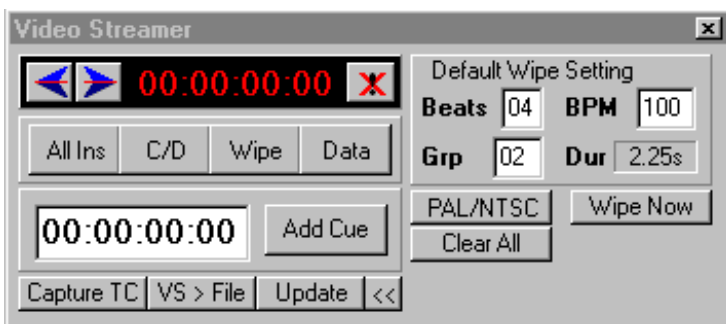
Update current list on screen from streamer



Show More Controls

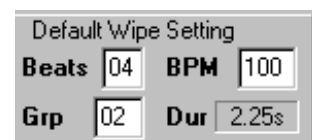


Show Less Controls



Default wipe settings panel

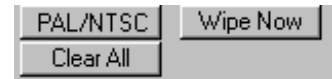
- 1) **BPM:** Beats per Minute
- 2) **Beats:** Number of beats
- 3) **Dur:** Wipe Duration, this is a calculated display only field
- 4) **Grp:** Group Number used when generating new cues



The Wipe/Count Down length is determined by the tempo in Beats per Minute and the number of beats according to the following formula
Wipe Duration (Seconds) = Beats * 60 / BPM

Special Functions

- 1) **PAL/NTSC:** Switches the Video Streamer from PAL to NTSC
- 2) **Wipe Now:** Used to check the current setting visually.
- 3) **Clear All:** Clear cue list in Streamer



Cue List Functions

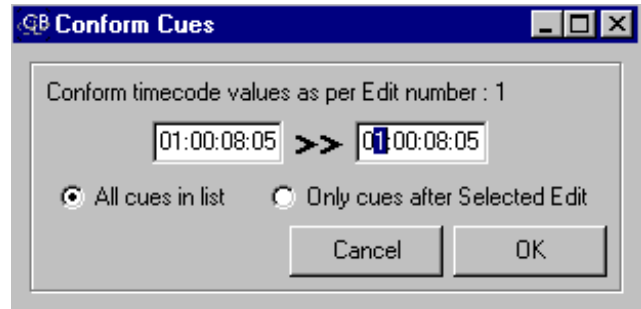
These are available from the Tools Menu

Conform cues

This allows you to change the timecode values in a list, first select a known cue, then select

Tools | Conform.

To allow for a video tape with different timecode values select 'All cues in list'.



To allow for an edit in a video tape edit, select 'Only cues after Selected Edit'.

Open In points, Open Out points

Used to add handles to the edits by opening in and out points either to all or selected cues.



Editing Cues

Simple editing is provided to allow for inserting, deleting or modifying cues. VSLink is not designed as a data entry tool (Use ADRTaker for this). To edit cues use the Edit key or Edit Menu. This will open the edit window

