



## Software updates

The flash rom of the UR422, MCU-1 and PD-1 is updated via the serial port. Software updates will be available on the [www.colinbroad.com](http://www.colinbroad.com) web site.

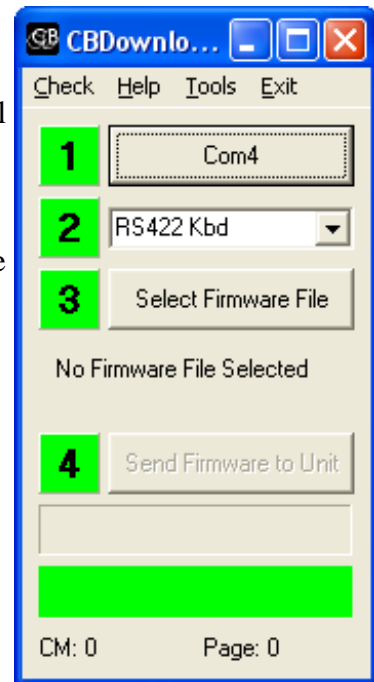
Use the CB Loader program distributed with this program to update the software via appropriate serial port (USB422: Serial 'A', PD-1 Input).

1. Select Serial Port on PC
2. Select Device type :- UR422 / MCU-1 / PD-1
3. Select firmware file to load
4. Load firmware file

The progress bar will show current progress

The Status bar will show error messages (Red) or current status (Green).

When Check is enabled you can see the messages.



If there is a problem and the load process is interrupted then powerup or reset the unit with the two keys listed below depressed. The unit will then enter a firmware load mode with a blank display

On the latest boot software (units sold after Oct 2005) the [4] indicator will light up Yellow when loading.

- |          |                          |
|----------|--------------------------|
| 1. UR422 | Jog & Shuttle keys       |
| 2. MCU-1 | Cal-A & Cal-B            |
| 3. PD-1  | Stem(^) & Assign(v) keys |

### Common reasons for software load failure are as follows:-

- 1) Using RS232 instead of RS422, solution use the CB Electronics USB-422 adaptor or the K2 systems RS232 to RS422 Converter.
- 2) Not Selecting port A to input in the UR-422 menu (this is not necessary on later software)..
- 3) Incorrect connections: There are two Sony connection formats Controller (output) or Device(Input). A controller may be connected directly to a Device using a one to one cable. Port A on the UR422 is configured as an output(Connect to USB-422 port B). The Input port on the PD-1 is configured as an input(connect to USB-422 port B).

### Load the UR-422

1. Select Device type: UR422
2. USB-422: Connect UR422 Port A to USB-422 Port A using a One to One Cable.
3. K2 Systems: Connect UR422 Port A to a K2 systems RS232 to RS422 converter using a Tx-

Rx Invert adapter.

### **load to the PD-1**

- 1) Select Device type: PD-1
- 2) Connect PD-1 Input port to USB-422 Port B using a One to One cable
- 3) Connect PD-1 Input Port to a K2 systems RS232 to RS422 converter using a one to one cable.