



# Windows 7

CB Electronics are in the process of updating windows programs to run on Windows 7, Mac and Linux. Most of our current programs run on Windows XP and will run on Windows 7 Pro in XP compatibility mode.

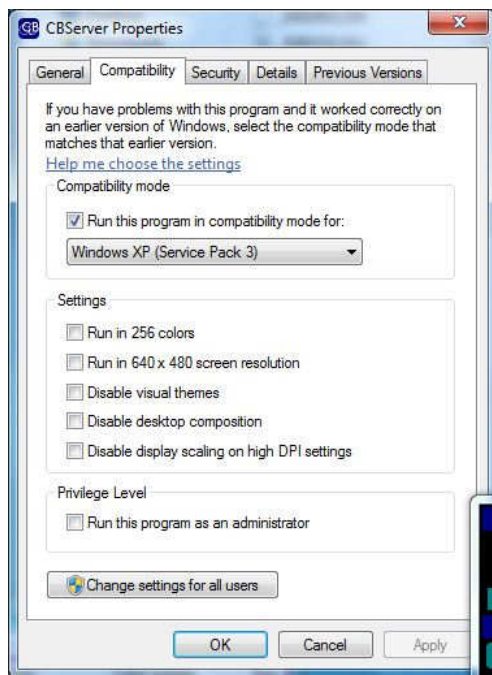
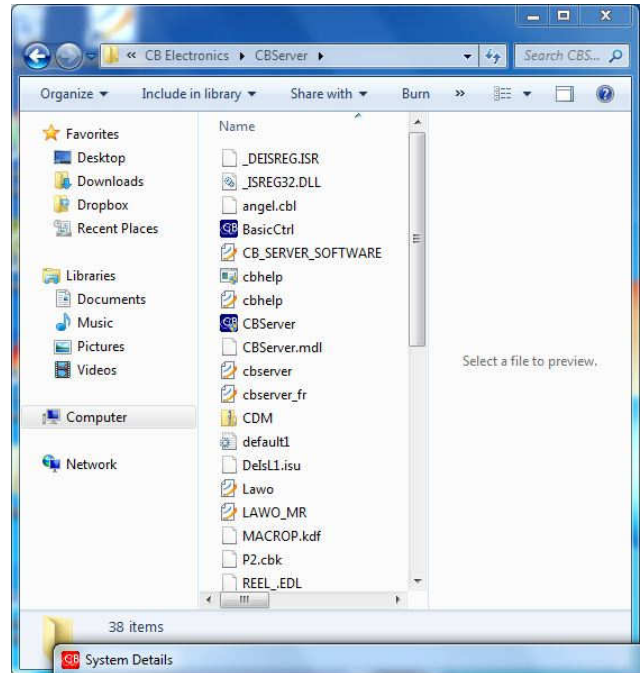
## Example

### CB Server

Open the CBServer directory, by default this is located at  
"C:\Program Files\CBElectronics\CBServer

Right Click on "CBServer.exe" and select properties.

Select the Compatibility tab and enable "Run this program in compatibility mode" as shown below



O

Repeat for "SysDisp.exe" and any other program.

Note: Check that your version of Windows 7 has an XP Compatibility mode, normally only available in Windows Pro and Windows Ultimate.

## CB Electronics

Loddonside, Lands End House, Beggars Hill Road, Charvil, Berkshire, RG10 0UD, UK  
Tel +44 (0) 1189 320345 Fax +44 (0) 1189 320346  
<http://www.colinbroad.com> E-mail Support@colinbroad.com