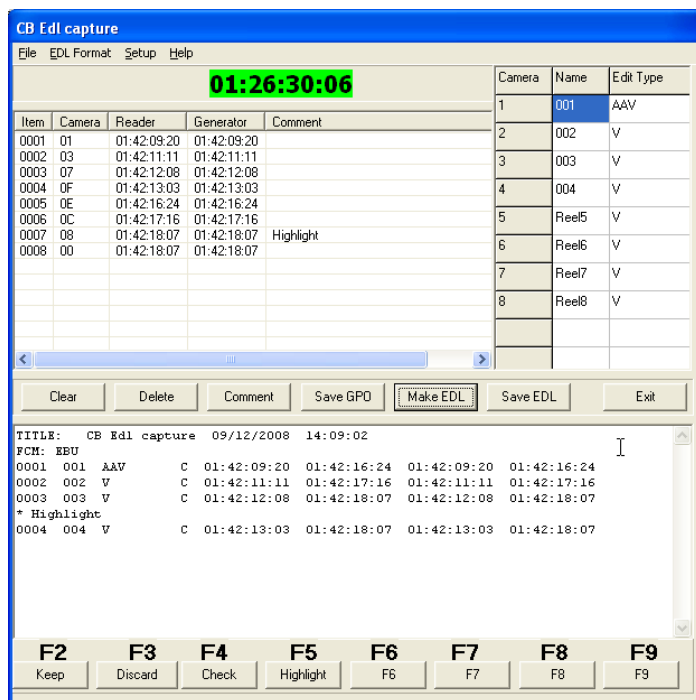




EDL Recorder

The CB EDL recorder enables easy reconstruction of live edits to simplify and reduce the time required in the generation of edited highlights. By logging the real time decisions of the video editor in a standard EDL format the original camera tapes/files may be accessed quickly and accurately.



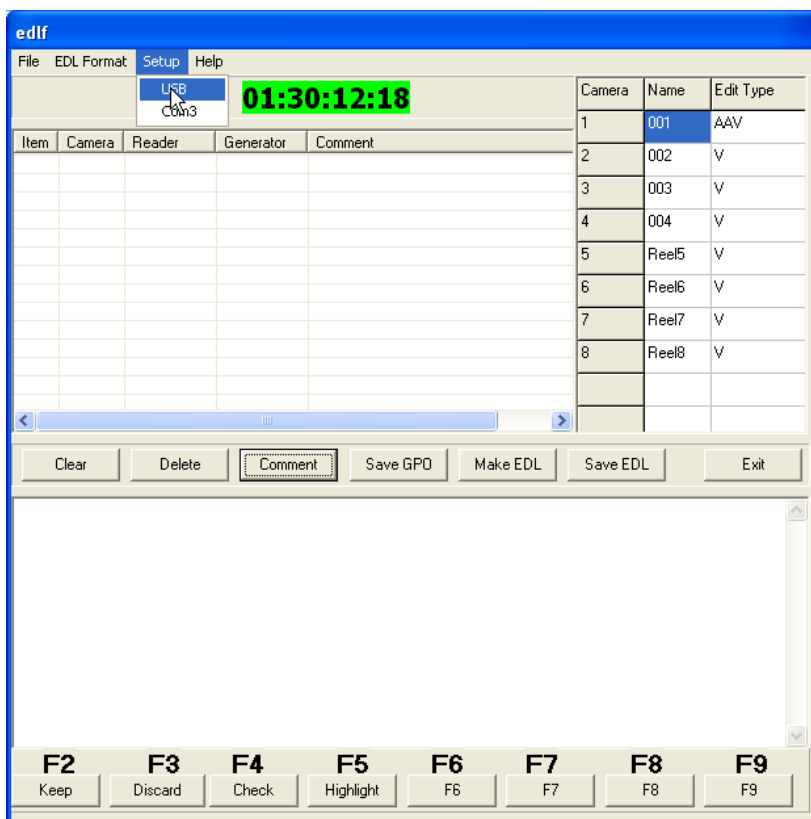
- A maximum of Eight or as an option Sixteen Source Reels GP Inputs
- Windows Program with USB LTC reader (P2MMC-USB)
- Multiple EDL formats
- Programmable Function keys for user Comments and Markers
- No Driver required

USB Setup page

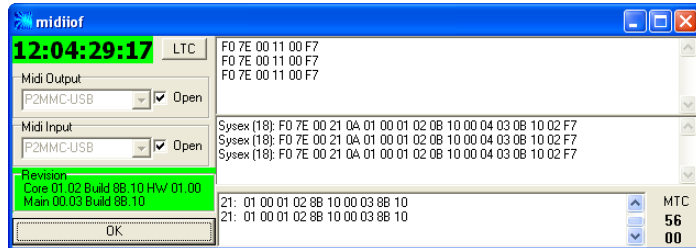
The first time you connect the interface to any computer you must select the Midi input device.

Access the USB setup page from the Setup Menu. Provided the P2MMC-USB name driver has been installed the Midi Input and Outputs will be named other wise they will be labelled as Generic 'Midi Audio device'

The LTC key in the USB setup window is used to preset the mode of the P2MMC-USB. This is stored in the EEPROM and should be set when you connect for the first time.



USB Input Select Page



The hardware revision and communications are displayed for debug. As MTC is received every 8mSec and updates the timecode display the MTC counter is used to indicate when it is running.

GPO Capture

The incoming GPO changes are saved in the GPO window, once captured they may also be saved/loaded in this format.

Function Keys

Functions keys [F2] .. [F9] are used to add comments to the last captured edit. Left clicking on the Display keys is the same as depressing the function keys. By Right clicking on the display keys you can preset the comment/marker for each key.

EDL Formats

The GPO change list is converted into a EDL list when the [Make EDL] key is depressed. The GPO list may be edited by deleting unwanted cues and adding comments before converting to an EDL. The Camera table allows you to name the camera reel and select the edit type for each GPO.

Other Formats

The default EDL format is CMX, if you use a different format please send us a sample and we will write a suitable driver and include it in the Menu.

Suggestions

If you have any ideas to improve our products, or new applications please make them to support@colinbroad.com. For example it could be useful to link GPO input 8 to [F9] so that a foot switch can be used to add a marker, let us know!

Connection Diagram

Note1: No connection is required to RS422, Video Sync or LTC Out.

Note2: GPO Outputs are not used.

Note3: GPI Inputs are Active Low and should be connected 0v to activate

P2MMC-USB GPIO Connections		
Pin	Pin	Function
1		GPI-Input 1
	14	GPO-Output 1 (GPI-Input 9)
2		GPI-Input 2
	15	GPO-Output 2 (GPI-Input 10)
3		GPI-Input 3
	16	GPO-Output 3 (GPI-Input 11)
4		GPI-Input 4
	17	GPO-Output 4 (GPI-Input 12)
5		GPI-Input 5
	18	GPO-Output 5 (GPI-Input 13)
6		GPI-Input 6
	19	GPO-Output 6 (GPI-Input 14)
7		GPI-Input 7
	20	GPO-Output 7 (GPI-Input 15)
8		GPI-Input 8
	21	GPO-Output 8 (GPI-Input 16)
9		
	22	
10		
	23	+5v
11		0v
	24	+5v
12		0v
	25	+5v
13		0v

CB Electronics

Loddonside, Lands End House, Beggars Hill Road, Charvil, Berkshire, RG10 0UD, UK
 Tel +44 (0) 1189 320345 Fax +44 (0) 1189 320346
<http://www.colinbroad.com> E-mail Support@colinbroad.com