



# P2MMCUSB Config

The New version of this program on both Mac and Windows, please make sure that you install the correct version.

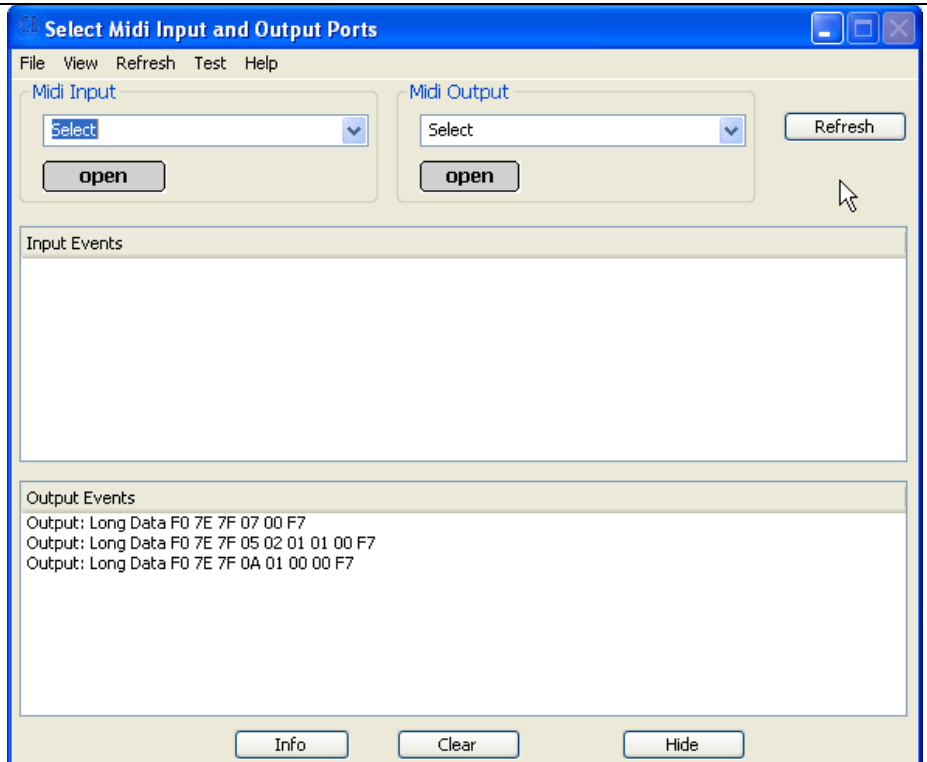
The first time that you run the P2MMCUSB Configuration software or if you run it without the P2MMC connected, the display will look like this



Select the Midi Input and Midi Output to P2MMC-USB, you may need to refresh the list. If you may need to click on the refresh key.

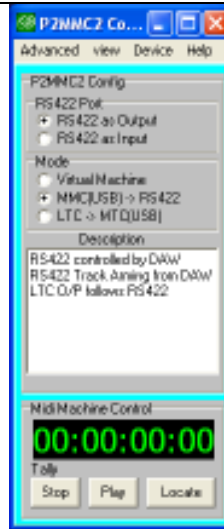
(Windows: If the p2mmc-USB device name driver is not installed then the generic name 'Audio Device' will be displayed).

Open both input and output.



The boxes have been filled by reading the data from the P2MMC-USB.

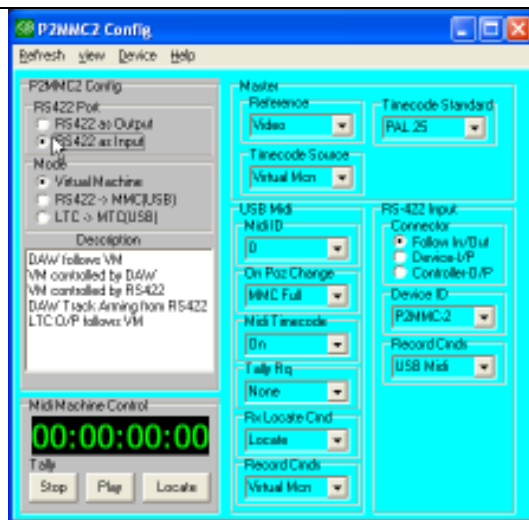
Selecting the RS422 port direction and mode will update the P2MMCUSB.



Selecting Advanced from the view menu will reveal the individual settings that you have selected and allow you to update them individually.

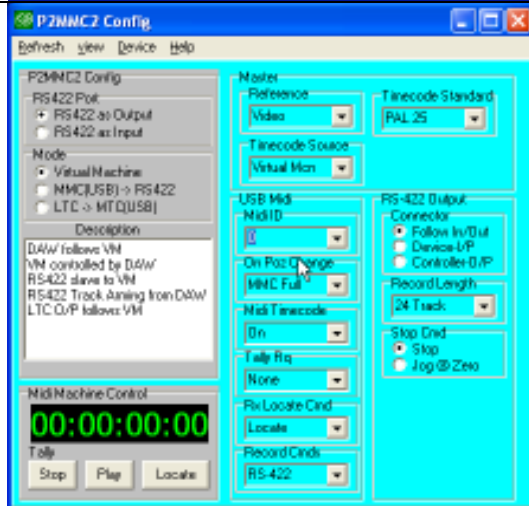
Note: you can update the display from the P2MMC-USB using Refresh/Config

Note the RS-422 port has been selected as an Input.



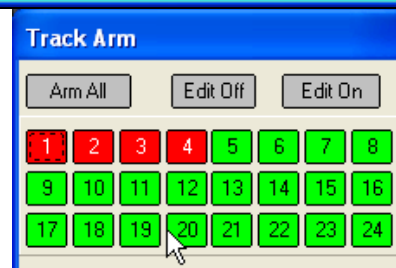
This shows the difference in the display when the RS-422 port has been selected as an Output.

The Midi Machine Control panel will allow you to check the P2MMC-2 USB-Midi interface



The Midi track arm panel may be enabled from the View menu

Not Yet Implemented on this version

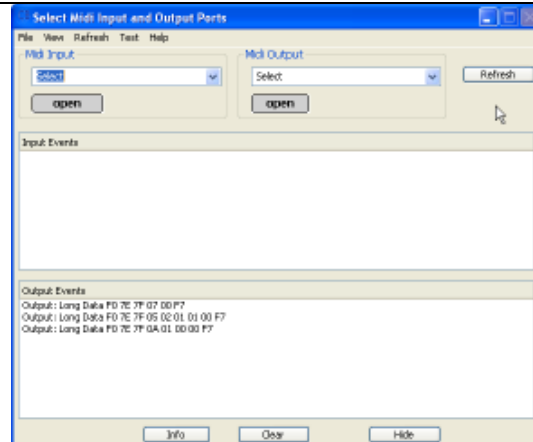


The MTC Generator may be enabled from the View menu. This generator runs at about ¼ play speed and should only be used to check the functionality.



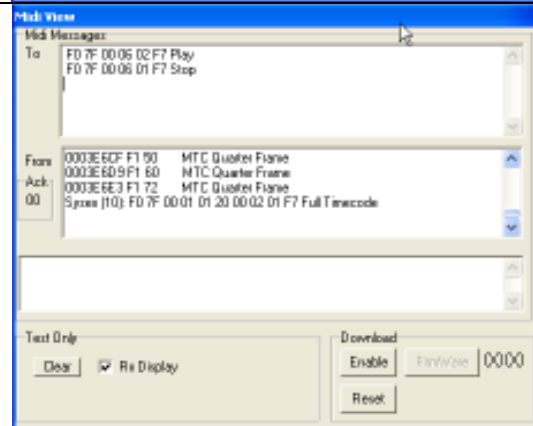
Not Yet Implemented on this version

The Midi Messages display may be enabled from the View menu

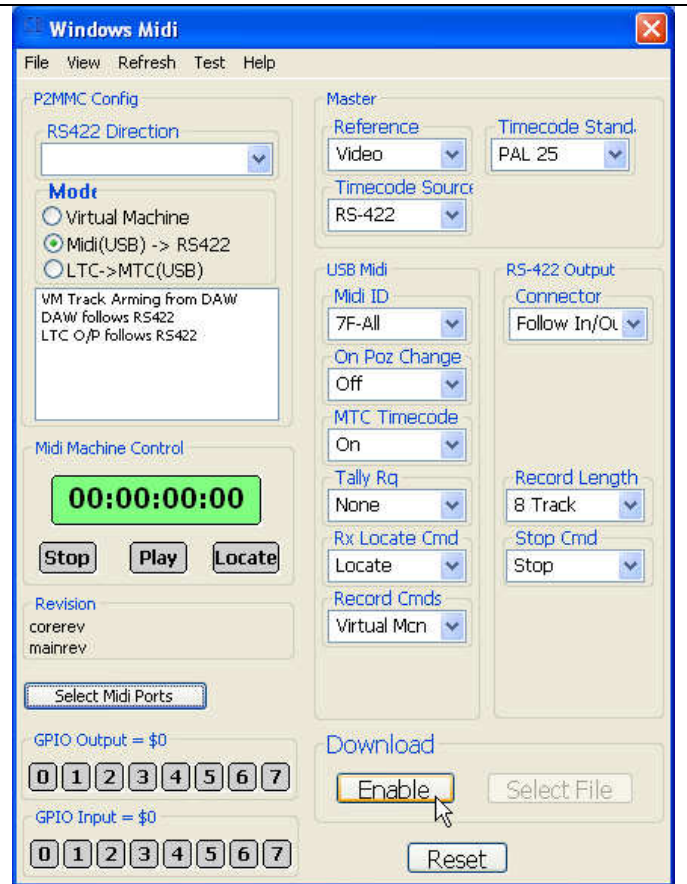


After Clicking on Stop followed by Play you can see the two commands that are sent, MTC Quarterframe messages and a MMC full timecode message.

The Clear key will clear this display to avoid confusion when testing

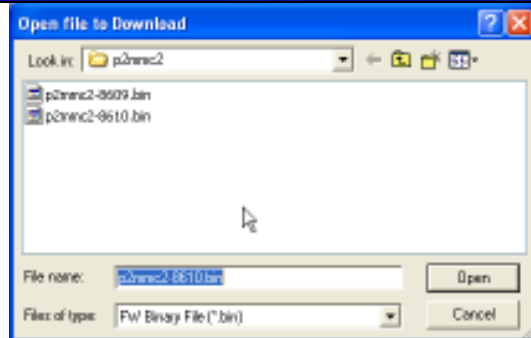


To update the software in the P2MMC-USB enable the advanced settings to display the download controls.



Select the file to open and open, the download will start. Once the download has started do not stop or disconnect the unit.

Once the counter has stopped you may restart the P2MMC-USB using the reset key.



### Recovery

If for any reason the p2mmc software is corrupted there is a recovery mode. Disconnect the USB connection, link pins 2 and 15 on the GPIO port and then reconnect the USB. The P2MMC is then in recovery mode and the P2MMConfig program may be used as normal.

### CB Electronics

Loddonside, Lands End House, Beggars Hill Road, Charvil, Berkshire, RG10 0UD, UK  
 Tel +44 (0) 1189 320345 Fax +44 (0) 1189 320346  
<http://www.colinbroad.com> E-mail Support@colinbroad.com